

**MALTA 4 (MAT-30031) (Version 1)**



**Product description**

Without remote driver - Constant voltage (CV) 24 V - Aluminium - IP20



**Luminaire Structure**

- Aluminium or stainless steel body
- Single cable entry
- One cable gland supplied with 1 m of 2x1.0 sqmm outdoor cable
- Stainless steel fasteners in grade 304 with zinc flake coating (ZFC)

- Durable silicone rubber gasket
- High-efficiency PMMA lens
- Remote driver (not included)
- Standard unit length is 1 m, different lengths are available upon request

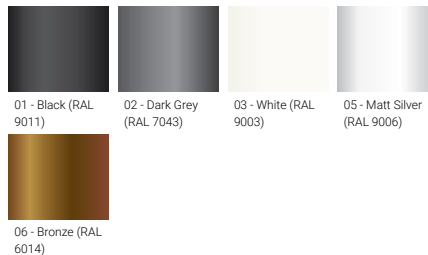
- All handrails and components are delivered completely pre-assembled for on-site installation
- LIGMAN prepares project handrail solutions according to layout drawings, elevations and project's brief; offering an end-to-end solution from concept through to implementation

**Optic**

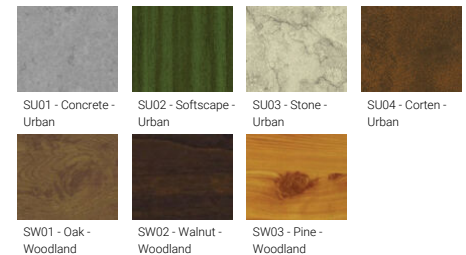


G

**Product colour**



**Special finishes upon request**



**MALTA 4 (MAT-30031) (Version 1)**

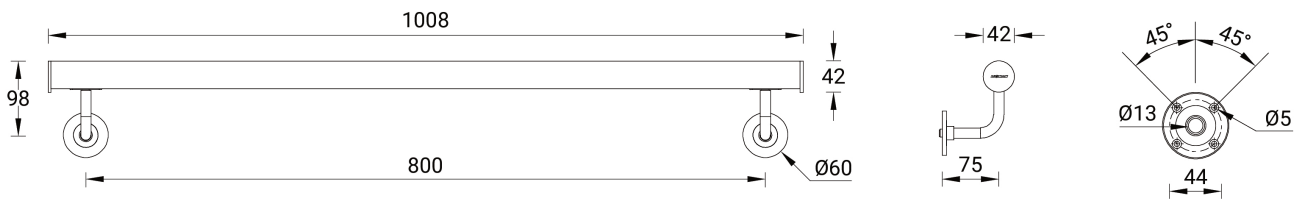
**Technical information**

<b>Material</b>	Aluminium
<b>Light source</b>	120 LED/m
<b>Power</b>	9 W
<b>Lumen</b>	337 - 362 lm
<b>Efficacy</b>	11 - 12 lm/W
<b>Driver option</b>	Remote driver (not included)
<b>Driver</b>	Constant voltage (CV)
<b>Input voltage</b>	24 VDC

<b>Optic</b>	G
<b>Optic value</b>	60°x111°
<b>CCT / CRI</b>	3000K CRI80, 4000K CRI80, 5700K CRI80
<b>Bug</b>	B0-U0-G0
<b>ULR</b>	0%
<b>ULOR</b>	0%
<b>CIE flux code n°3</b>	98
<b>Dimming type</b>	On/Off

<b>Product colours</b>	Black, Dark Grey, White, Matt Silver, Bronze, Concrete - Urban, Softscape - Urban, Stone - Urban, Corten - Urban, Oak - Woodland, Walnut - Woodland, Pine - Woodland
<b>Weight</b>	2.1 kg/m
<b>Operating temperature</b>	-20 °C to 40 °C
<b>Cable</b>	One cable gland supplied with 1 m of 2x1.0 sqmm outdoor cable
<b>Through wiring</b>	Single cable entry
<b>Lens / Reflector / Optic</b>	High-efficiency PMMA lens
<b>MacAdam Ellipse</b>	3 SDCM
<b>Lifetime L80B10 (hours)</b>	> 50,000

MAT-30031



**Accessories**



Connector for cap rail - Straight  
**A30181**



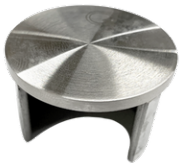
Connector for cap rail - Flush elbow 90°  
**A30281**



Connector for cap rail - Adjustable flush angle, 135° downwards  
**A30481**



Connector for cap rail - Adjustable flush angle, 135° upwards  
**A30381**

**MALTA 4 (MAT-30031) (Version 1)**

End cap for cap rail  
**A30581**



Wall bracket  
**A30681**



DALI Control System  
**Control-DALI**



Driver (CV) - On/Off - 60 W - IP67  
- 24 V  
**A34591-ND**



Driver (CV) - On/Off - 100 W -  
IP67 - 24 V  
**A34791-ND**



Driver (CV) - On/Off - 150 W -  
IP67 - 24 V  
**A34891-ND**



Driver (CV) - On/Off - 36 W - IP67  
- 24 V  
**A34491-ND**



Driver (CV) - On/Off - 200 W -  
IP67 - 24 V  
**A34991-ND**



Driver (CV) - On/Off - 350 W -  
IP67 - 24 V  
**A35091-ND**