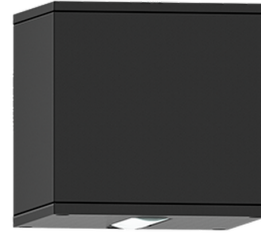


MATRIX 2 (MT-31402)



Product description

Down (Optic) & Up (Optic 2nd) - Without lamp



Luminaire Structure

- Die-cast aluminium housing
- Pre-treated before powder coating ensuring high corrosion resistance
- Single cable entry
- Stainless steel fasteners in grade 304 with zinc flake coating (ZFC)

- Durable silicone rubber gasket
- Clear toughened glass
- Integral control gear
- Optional surface mounting box for easy wiring or conduit connection when wiring from behind is not possible

- MATRIX luminaires with uplight and colder than 3000K CCT do not meet the IDA certification requirements

Optic



L / L

Product colour

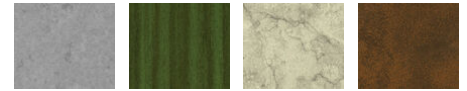


01 - Black (RAL 9011) 02 - Dark Grey (RAL 7043) 03 - White (RAL 9003) 05 - Matt Silver (RAL 9006)

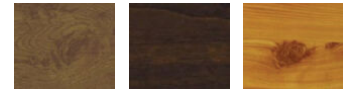


06 - Bronze (RAL 6014)

Special finishes upon request



SU01 - Concrete - Urban SU02 - Softscape - Urban SU03 - Stone - Urban SU04 - Corten - Urban



SW01 - Oak - Woodland SW02 - Walnut - Woodland SW03 - Pine - Woodland

MATRIX 2 (MT-31402)

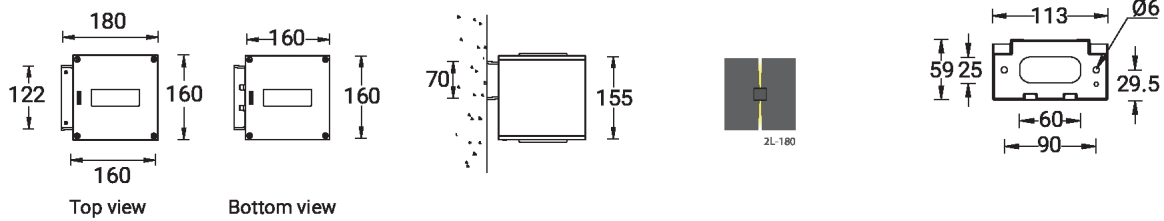
Technical information

Material	Aluminium
Light source	HIT-TC-EC 35W
Power	35 W
Lumen	240 lm
Efficacy	6 lm/W
Driver option	Integral control gear
Driver	Constant current (CC)

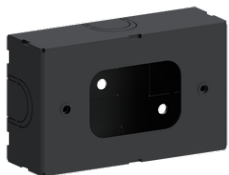
Input voltage	220-240 V 50/60 Hz
Optic	L
Optic value	5°
Optic (2nd)	L
Optic (2nd) value	5°
CCT / CRI	3000K CRI80, 4000K CRI80
Dimming type	On/Off

Product colours	Black, Dark Grey, White, Matt Silver, Bronze, Concrete - Urban, Softscape - Urban, Stone - Urban, Corten - Urban, Oak - Woodland, Walnut - Woodland, Pine - Woodland
Weight	2.1 kg
Operating temperature	-20 °C to 40 °C
Through wiring	Single cable entry
Lens / Reflector / Optic	Clear toughened glass

MT-31402



Accessories



Surface mounting box for easy cabling (MATRIX 2)
SCE-MATRIX-2



DALI Control System
Control-DALI