

NIKON 5 (NI-80042-A)



Product description

Integral control gear - Round - Aluminium frame



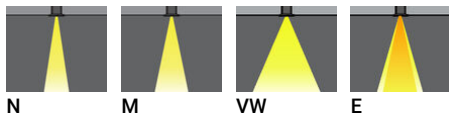
Luminaire Structure

- Die-cast aluminium housing
- Pre-treated before powder coating ensuring high corrosion resistance
- 6 mm thick front ring in stainless steel or aluminium
- Single cable entry, through wiring upon request

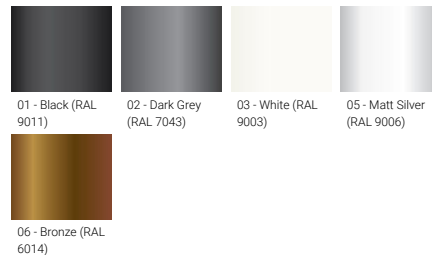
- One cable gland supplied with 1.5 m of 3x1.0 sqmm outdoor cable
- Stainless steel fasteners in grade 304 with zinc flake coating (ZFC)
- Durable silicone rubber gasket
- Clear toughened glass

- Integral control gear

Optic



Product colour

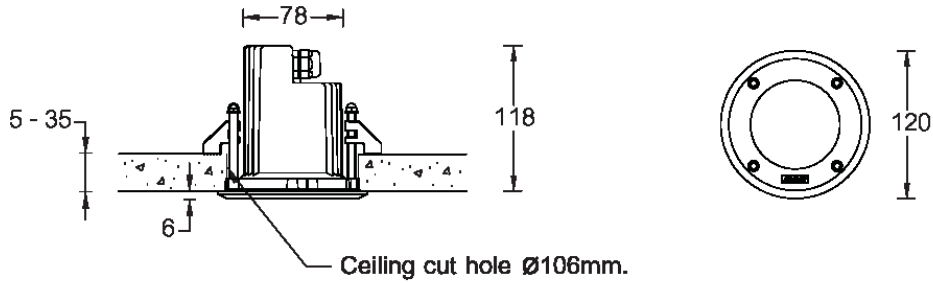


NIKON 5 (NI-80042-A)

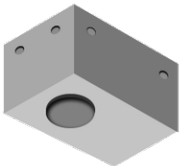
Technical information

Material	Aluminium	Driver	Constant current (CC)	Product colours	Black, Dark Grey, White, Matt Silver, Bronze
Light source	MR16-GU10	Input voltage	220-240 V 50/60 Hz	Weight	0.5 kg
Power	7.5 W	Optic	N, M, VW, E	Operating temperature	-20 °C to 40 °C
Lumen	369 - 455 lm	Optic value	10°, 25°, 60°, 10°x60°	Cable	One cable gland supplied with 1.5 m of 3x1.0 sqmm outdoor cable
Efficacy	49 - 61 lm/W	CCT / CRI	3000K CRI80, 4000K CRI80	Through wiring	Single cable entry, through wiring upon request
Driver option	Integral control gear	Dimming type	On/Off	Lens / Reflector / Optic	Clear toughened glass

NI-80042-A



Accessories



Concrete box modification upon request

CONCRETE-BOX