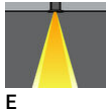
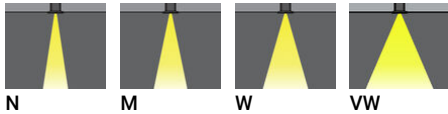


**NIKON 5** (NI-80042-S)**Product description**

Integral control gear - Round - Stainless steel frame

**Luminaire Structure**

- Die-cast aluminium housing
- Pre-treated before powder coating ensuring high corrosion resistance
- 6 mm thick front ring in stainless steel or aluminium
- Single cable entry, through wiring upon request
- One cable gland supplied with 1.5 m of 3x1.0 sqmm outdoor cable
- Stainless steel fasteners in grade 304 with zinc flake coating (ZFC)
- Durable silicone rubber gasket
- Clear toughened glass
- Integral control gear

**Optic****Product colour**

00 - Stainless Steel

**NIKON 5 (NI-80042-S)**

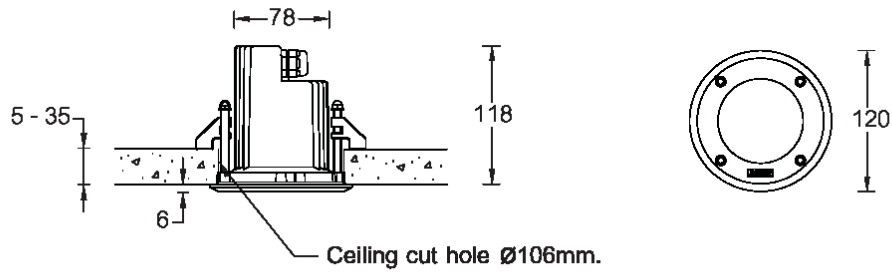
**Technical information**

<b>Material</b>	Stainless Steel
<b>Light source</b>	MR16-GU10
<b>Power</b>	7.5 W
<b>Lumen</b>	369 - 455 lm
<b>Efficacy</b>	49 - 61 lm/W
<b>Driver option</b>	Integral control gear
<b>Driver</b>	Constant current (CC)
<b>Input voltage</b>	220-240 V 50/60 Hz

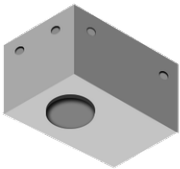
<b>Optic</b>	N, M, W, VW, E
<b>Optic value</b>	10°, 25°, 36°, 60°, 10°x60°
<b>CCT / CRI</b>	3000K CRI80, 4000K CRI80
<b>Bug</b>	B0-U1-G0, B1-U1-G0
<b>ULR</b>	0%
<b>ULOR</b>	0%
<b>CIE flux code n°3</b>	100
<b>Dimming type</b>	On/Off

<b>Product colours</b>	Stainless Steel
<b>Weight</b>	0.6 kg
<b>Operating temperature</b>	-20 °C to 40 °C
<b>Cable</b>	One cable gland supplied with 1.5 m of 3x1.0 sqmm outdoor cable
<b>Through wiring</b>	Single cable entry, through wiring upon request
<b>Lens / Reflector / Optic</b>	Clear toughened glass

**NI-80042-S**



**Accessories**



Concrete box modification upon request

**CONCRETE-BOX**