

NIKON 4 (NI-80531-A)



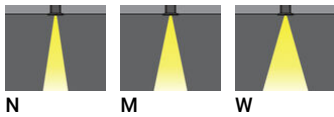
Product description

With remote box IP-rated / remote driver - Square - Aluminium frame

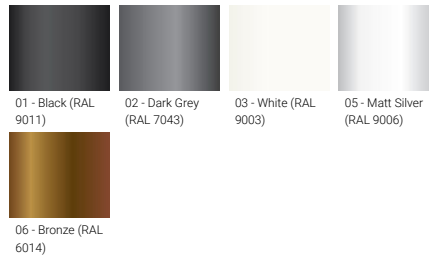
Luminaire Structure

- Die-cast aluminium housing
- Pre-treated before powder coating ensuring high corrosion resistance
- 6 mm thick front ring in stainless steel or aluminium
- Single cable entry
- Stainless steel fasteners in grade 304 with zinc flake coating (ZFC)
- Durable silicone rubber gasket
- Clear toughened glass
- Remote driver (included)

Optic



Product colour

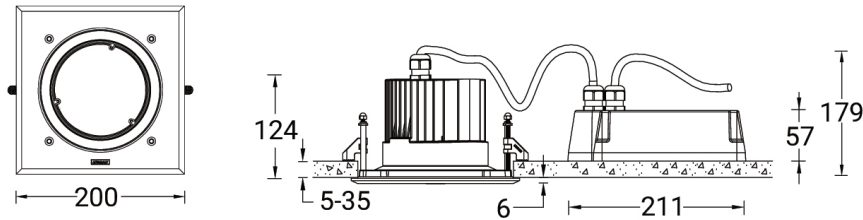


NIKON 4 (NI-80531-A)

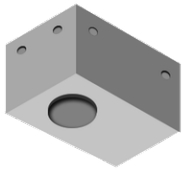
Technical information

Material	Aluminium	Optic	N, M, W	Lens / Reflector / Optic	Clear toughened glass
Light source	18 LED	Optic value	15°, 27°, 44°	MacAdam Ellipse	3 SDCM
Power	29 W	CCT / CRI	3000K CRI80, 4000K CRI80	Lifetime L90B10 (hours)	> 120,000
Lumen	2689 - 3144 lm	Dimming type	On/Off, 1-10V, DALI	Lifetime L80B10 (hours)	> 120,000
Efficacy	93 - 108 lm/W	Product colours	Black, Dark Grey, White, Matt Silver, Bronze	Lifetime L80B50 (hours)	> 120,000
Driver option	Remote driver (included)	Weight	2.5 kg	Variants (1-10V)	Compatible with EN/ IEC 60598-2-22: Suitable for emergency installations as central supply, non-maintained (Z0)
Driver	Constant current (CC)	Operating temperature	-20 °C to 50 °C		
Input voltage	1000 mA, 27 VDC	Through wiring	Single cable entry		

NI-80531-A



Accessories



Concrete box modification upon request
CONCRETE-BOX



DALI Control System
Control-DALI