

NIKON 4 (NI-80533-S)



Product description

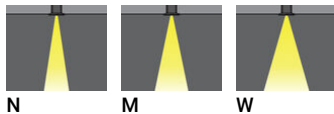
With remote box IP-rated / remote driver - Square -
Stainless steel frame



Luminaire Structure

- Die-cast aluminium housing
- Pre-treated before powder coating ensuring high corrosion resistance
- 6 mm thick front ring in stainless steel or aluminium
- Single cable entry
- Stainless steel fasteners in grade 304 with zinc flake coating (ZFC)
- Durable silicone rubber gasket
- Clear toughened glass
- Remote driver (included)

Optic



Product colour

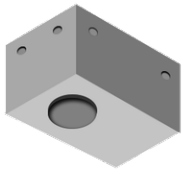


NIKON 4 (NI-80533-S)

Technical information

| | | | | | |
|----------------------|--------------------------|--------------------------|--------------------------|---------------------------------|---|
| Material | Stainless Steel | Optic value | 15°, 26°, 45° | Operating temperature | -20 °C to 50 °C |
| Light source | 24 LED | CCT / CRI | 3000K CRI80, 4000K CRI80 | Through wiring | Single cable entry |
| Power | 39 W | Bug | B3-U0-G0 | Lens / Reflector / Optic | Clear toughened glass |
| Lumen | 3794 - 4303 lm | ULR | 0% | MacAdam Ellipse | 3 SDCM |
| Efficacy | 97 - 110 lm/W | ULOR | 0% | Lifetime L90B10 (hours) | > 120,000 |
| Driver option | Remote driver (included) | CIE flux code n°3 | 100 | Lifetime L80B10 (hours) | > 120,000 |
| Driver | Constant current (CC) | Dimming type | On/Off, 1-10V, DALI | Lifetime L80B50 (hours) | > 120,000 |
| Input voltage | 1000 mA, 36 VDC | Product colours | Stainless Steel | Variants (1-10V, DALI) | Compatible with EN/ IEC 60598-2-22: Suitable for emergency installations as central supply, non-maintained (Z0) |
| Optic | N, M, W | Weight | 2.8 kg | | |

Accessories



Concrete box modification upon request

CONCRETE-BOX



DALI Control System
Control-DALI