

**NIKON 4** (NI-80535-A)



**Product description**

With remote box IP-rated / remote driver - Square - Aluminium frame

**Luminaire Structure**

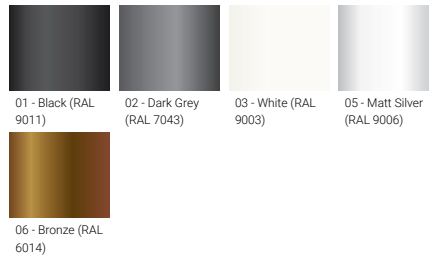
- Die-cast aluminium housing
- Pre-treated before powder coating ensuring high corrosion resistance
- 6 mm thick front ring in stainless steel or aluminium
- Single cable entry
- Stainless steel fasteners in grade 304 with zinc flake coating (ZFC)
- Durable silicone rubber gasket
- Clear toughened glass
- Remote driver (included)

**Optic**



VN

**Product colour**

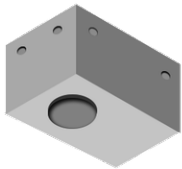


**NIKON 4 (NI-80535-A)**

**Technical information**

<b>Material</b>	Aluminium	<b>Optic</b>	VN	<b>Lens / Reflector / Optic</b>	Clear toughened glass
<b>Light source</b>	7 LED	<b>Optic value</b>	8°	<b>MacAdam Ellipse</b>	3 SDCM
<b>Power</b>	33 W	<b>CCT / CRI</b>	3000K CRI80, 4000K CRI80	<b>Lifetime L90B10 (hours)</b>	> 109,000
<b>Lumen</b>	2841 - 3320 lm	<b>Dimming type</b>	On/Off, 1-10V, DALI	<b>Lifetime L80B10 (hours)</b>	> 109,000
<b>Efficacy</b>	86 - 101 lm/W	<b>Product colours</b>	Black, Dark Grey, White, Matt Silver, Bronze	<b>Lifetime L80B50 (hours)</b>	> 109,000
<b>Driver option</b>	Remote driver (included)	<b>Weight</b>	2.8 kg	<b>Variants (On/Off, 1-10V, DALI)</b>	Compatible with EN/ IEC 60598-2-22: Suitable for emergency installations as central supply, non-maintained (Z0)
<b>Driver</b>	Constant current (CC)	<b>Operating temperature</b>	-20 °C to 50 °C		
<b>Input voltage</b>	350 mA, 84 VDC	<b>Through wiring</b>	Single cable entry		

**Accessories**



Concrete box modification upon request  
**CONCRETE-BOX**



DALI Control System  
**Control-DALI**