

**NORDSTROM 2 (NOD-50012) (Version 1)**



**Product description**

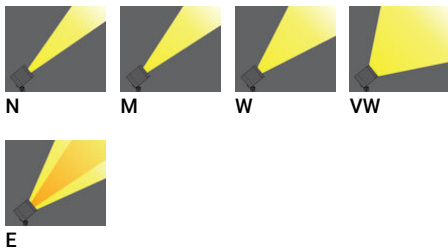
With remote driver IP-rated - Constant voltage (CV) 24 V - 82x82 mm - Class III - RGBW



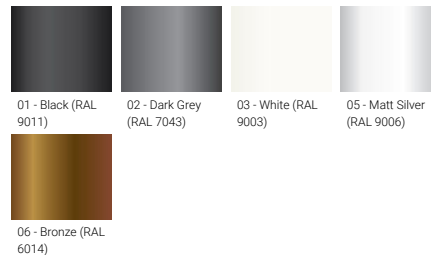
**Luminaire Structure**

- Die-cast aluminium housing
- Pre-treated before powder coating ensuring high corrosion resistance
- Thermal heat dissipation body
- Single cable entry
- One IP68 connector supplied with 0.2 m of 8x0.5 sqmm outdoor cable
- Stainless steel fasteners in grade 304 with zinc flake coating (ZFC)
- Durable silicone rubber gasket
- High-efficiency PMMA lens
- Clear toughened glass
- Remote driver (included)

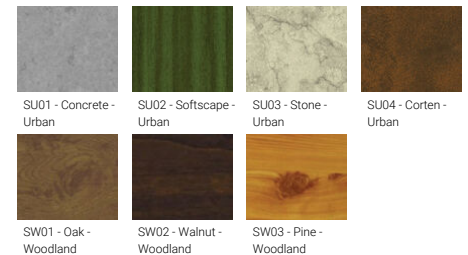
**Optic**



**Product colour**



**Special finishes upon request**

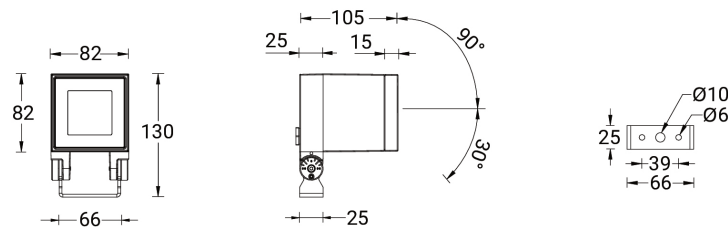


**NORDSTROM 2 (NOD-50012) (Version 1)**

**Technical information**

<b>Material</b>	Aluminium	<b>Input voltage</b>	24 VDC	<b>Operating temperature</b>	-20 °C to 40 °C
<b>Light source</b>	4 LED	<b>Optic</b>	N, M, W, VW, E	<b>Cable</b>	One IP68 connector supplied with 0.2 m of 8x0.5 sqmm outdoor cable
<b>Power</b>	13 W	<b>Optic value</b>	8°, 17°, 26°, 65°, 43°x11°	<b>Through wiring</b>	Single cable entry
<b>Lumen</b>	406 - 520 lm	<b>CCT / CRI</b>	RGBW30, RGBW40	<b>Lens / Reflector / Optic</b>	High-efficiency PMMA lens, Clear toughened glass
<b>Efficacy</b>	41 - 52 lm/W	<b>Dimming type</b>	DMX, DMX/RDM	<b>Variants (DMX/RDM)</b>	Compatible with EN/ IEC 60598-2-22: Suitable for emergency installations as central supply, non-maintained (Z0)
<b>Driver option</b>	Remote driver (included)	<b>Product colours</b>	Black, Dark Grey, White, Matt Silver, Bronze, Concrete - Urban, Softscape - Urban, Stone - Urban, Corten - Urban, Oak - Woodland, Walnut - Woodland, Pine - Woodland		
<b>Driver</b>	Constant voltage (CV)	<b>Weight</b>	1.3 kg		

**NOD-50012**



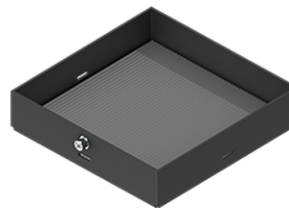
**Accessories**



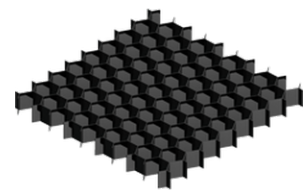
DMX Control System  
**Control-DMX**



DMX/RDM Control System  
**Control-DMX-RDM**



Linear spread lens  
**A51214**



Honeycomb louvre  
**A51921**

**NORDSTROM 2** (NOD-50012) (Version 1)

Anti-glare visor

**A52931**

Please contact the factory for technical details if you wish to use Anti-glare accessories, Colour filters, Lenses and slip glasses in combination.