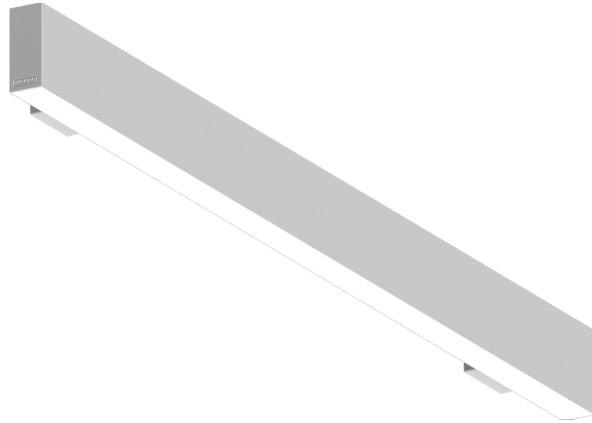


**NYBRO 7 (NYB-30064)**



**Product description**

Down - 40x80 mm - 2906 mm - TW



**Luminaire Structure**

- Die-cast aluminium end-caps and extruded aluminium profile with powder coating
- Single cable entry
- Stainless steel fasteners in grade 316
- PMMA diffuser with Opal (UGR <19) and micro prismatic (UGR <13) options for better glare control

- Up and down light distribution options
- Passive thermal management
- Integral control gear
- Wireless control available through Bluetooth connection

- Daylight and occupancy sensor options
- Emergency module (1 or 3 hours) is available upon request with 3 options (BASIC, SELF-TEST, PRO-DALI)

**Optic**



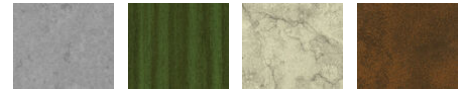
P

**Product colour**

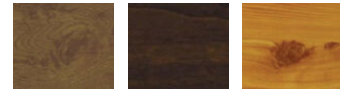


01 - Black (RAL 9011)    03 - White (RAL 9003)    05 - Matt Silver (RAL 9006)

**Special finishes upon request**



SU01 - Concrete - Urban    SU02 - Softscape - Urban    SU03 - Stone - Urban    SU04 - Corten - Urban



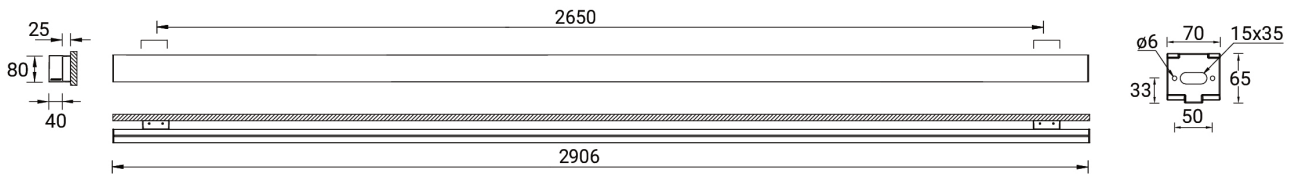
SW01 - Oak - Woodland    SW02 - Walnut - Woodland    SW03 - Pine - Woodland

**NYBRO 7 (NYB-30064)**

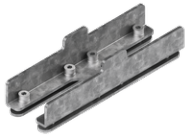
**Technical information**

|                      |                       |                          |   |                                |   |
|----------------------|-----------------------|--------------------------|---|--------------------------------|---|
| <b>Material</b>      | Aluminium             | <b>Optic</b>             | O, P  | <b>Weight</b>                  | 6.75 kg   |
| <b>Light source</b>  | 360 LED               | <b>CCT / CRI</b>         | TW (2700K - 6500K)  | <b>Operating temperature</b>   | -20 °C to 40 °C   |
| <b>Power</b>         | 62 W                  | <b>Bug</b>               | B2-U1-G1  | <b>MacAdam Ellipse</b>         | 3 SDCM  |
| <b>Lumen</b>         | 5775 lm               | <b>ULR</b>               | 0%  | <b>Lifetime L90B10 (hours)</b> | > 23,000  |
| <b>Efficacy</b>      | 199 lm/W              | <b>ULOR</b>              | 0%  | <b>Lifetime L80B10 (hours)</b> | > 45,000  |
| <b>Driver option</b> | Integral control gear | <b>CIE flux code n°3</b> | 96, 98  | <b>Lifetime L80B50 (hours)</b> | > 50,000  |
| <b>Driver</b>        | Constant current (CC) | <b>Dimming type</b>      | DALI  | <b>Variants (DALI)</b>         | Compatible with EN/ IEC 60598-2-22: Suitable for emergency installations as central supply, non-maintained (Z0) |
| <b>Input voltage</b> | 220-240 V 50/60 Hz    | <b>Product colours</b>   | Black, White, Matt Silver, Concrete - Urban, Softscape - Urban, Stone - Urban, Corten - Urban, Oak - Woodland, Walnut - Woodland, Pine - Woodland |                                |   |

NYB-30064



**Accessories**



Continuous-coupler bracket  
(40/50 mm Down profile)  
**A81881**



DALI Control System  
**Control-DALI**