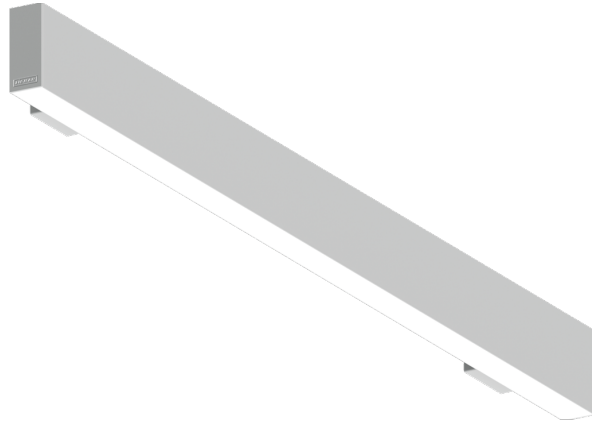


NYBRO 8 (NYB-30246)



Product description

Down - 60x80 mm - 1754 mm - RGBW



Luminaire Structure

- Die-cast aluminium end-caps and extruded aluminium profile with powder coating
- Single cable entry
- Stainless steel fasteners in grade 316
- PMMA diffuser with Opal (UGR <19) and micro prismatic (UGR <13) options for better glare control

- Up and down light distribution options
- Passive thermal management
- Integral control gear
- Wireless control available through Bluetooth connection

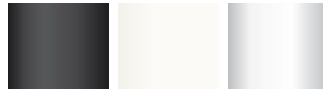
- Daylight and occupancy sensor options
- Emergency module (1 or 3 hours) is available upon request with 3 options (BASIC, SELF-TEST, PRO-DALI)

Optic



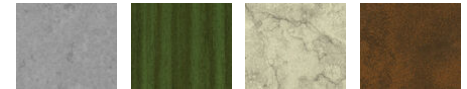
P

Product colour

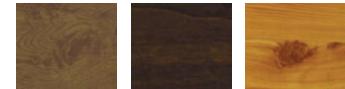


01 - Black (RAL 9011) 03 - White (RAL 9003) 05 - Matt Silver (RAL 9006)

Special finishes upon request



SU01 - Concrete - Urban SU02 - Softscape - Urban SU03 - Stone - Urban SU04 - Corten - Urban



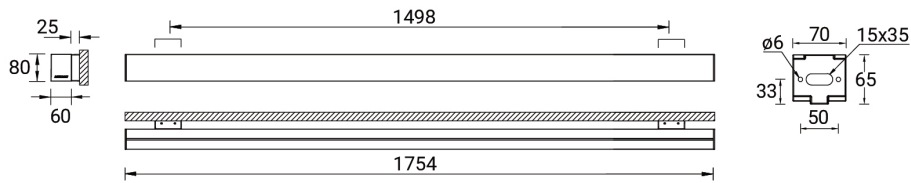
SW01 - Oak - Woodland SW02 - Walnut - Woodland SW03 - Pine - Woodland

NYBRO 8 (NYB-30246)

Technical information

Material	Aluminium	Driver option	Integral control gear	CCT / CRI	RGBW40
Light source	288 LED	Driver	Constant current (CC)	Dimming type	Bluetooth
Power	63 W	Input voltage	220-240 V 50/60 Hz	Product colours	Black, White, Matt Silver, Concrete - Urban, Softscape
Lumen	4356 lm	Optic	O, P		- Urban, Stone - Urban, Corten - Urban, Oak - Woodland, Walnut - Woodland, Pine - Woodland
Efficacy	69 lm/W	Optic value	Opal, Micro-prismatic	Weight	5.50 kg
				Operating temperature	-20 °C to 40 °C

NYB-30246



Accessories



Continuous-coupler bracket
(60/70 mm Down & 60 mm
Down & Up profile)
A81581



Xpress wireless switch
A90591



Recessing box
A61051



DALI Control System
Control-DALI