

NYBRO 8 (NYB-30345)



Product description

Down (Optic) & Up (Optic 2nd) - 60x95 mm - RGBW



microPrim™

Luminaire Structure

- Die-cast aluminium end-caps and extruded aluminium profile with powder coating
- Passive thermal management
- Single cable entry
- Stainless steel fasteners in grade 304 with zinc flake coating (ZFC)

- PMMA diffuser with Opal (UGR <19) and micro prismatic (UGR <13) options for better glare control
- Integral control gear
- Up and down light distribution options
- Wireless control available through Bluetooth connection

- Daylight and occupancy sensor options
- Emergency module (1 or 3 hours) is available upon request with 3 options (BASIC, SELF-TEST, PRO-DALI)

Optic



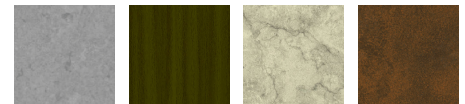
O / O P / O

Product colour



01 - Black (RAL 9011) 03 - White (RAL 9003) 05 - Matt Silver (RAL 9006)

Special finishes upon request



SU01 - Concrete - Urban SU02 - Softscape - Urban SU03 - Stone - Urban SU04 - Corten - Urban



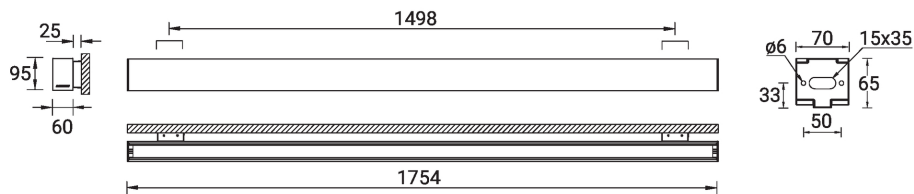
SW01 - Oak - Woodland SW02 - Walnut - Woodland SW03 - Pine - Woodland

NYBRO 8 (NYB-30345)

Technical information

Material	Aluminium	Driver	Constant current (CC)	CCT / CRI	RGBW40
Light source	288 & 272 LED	Input voltage	220-240 V 50/60 Hz	Dimming type	Bluetooth
Power	122 W	Optic	O, P	Product colours	Black, White, Matt Silver, Concrete - Urban, Softscape - Urban, Stone - Urban, Corten - Urban, Oak - Woodland, Walnut - Woodland, Pine - Woodland
Lumen	8470 lm	Optic value	Opal, Micro-prismatic		
Efficacy	69 lm/W	Optic (2nd)	O		
Driver option	Integral control gear	Optic (2nd) value	Opal	Weight	6.9 kg
				Operating temperature	-20 °C to 40 °C

NYB-30345



NYBRO 8 (NYB-30345)**Accessory**



Continuous-coupler bracket
(60/70 mm Down & 60 mm
Down & Up profile)
A81581



Wireless bluetooth converter
A90291



Xpress wireless switch
A90591
