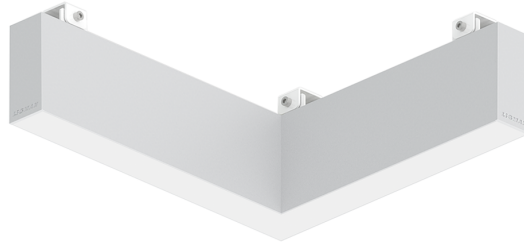


**NYBRO 12 (NYB-80782-SU)**



**Product description**

Down (Optic) & Up (Optic 2nd) - L90° - 40x95 mm - 336 mm



**Luminaire Structure**

- Die-cast aluminium end-caps and extruded aluminium profile with powder coating
- Stainless steel fasteners in grade 316
- Stainless steel brackets and screws for mounting

- PMMA diffuser with Opal (UGR <19) and micro prismatic (UGR <13) options for better glare control
- Up and down light distribution options
- Passive thermal management

- Integral control gear
- Wireless control available through Bluetooth connection
- Daylight and occupancy sensor options

**Optic**



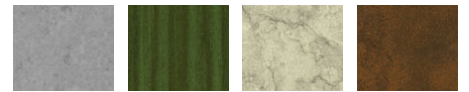
P / O

**Product colour**



01 - Black (RAL 9011)    03 - White (RAL 9003)    05 - Matt Silver (RAL 9006)

**Special finishes upon request**



SU01 - Concrete - Urban    SU02 - Softscape - Urban    SU03 - Stone - Urban    SU04 - Corten - Urban



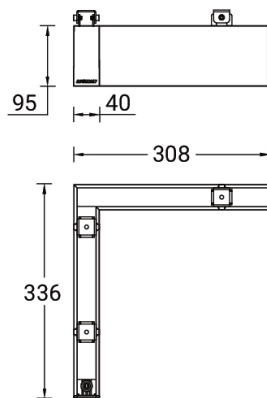
SW01 - Oak - Woodland    SW02 - Walnut - Woodland    SW03 - Pine - Woodland

**NYBRO 12 (NYB-80782-SU)**

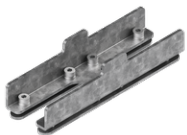
**Technical information**

|                      |                       |                          |                                                                                                                                                   |                                |                                                                                                                 |
|----------------------|-----------------------|--------------------------|---------------------------------------------------------------------------------------------------------------------------------------------------|--------------------------------|-----------------------------------------------------------------------------------------------------------------|
| <b>Material</b>      | Aluminium             | <b>Optic</b>             | O, P                                                                                                                                              | <b>Operating temperature</b>   | -20 °C to 40 °C                                                                                                 |
| <b>Light source</b>  | 72 & 60 LED           | <b>Optic value</b>       | Opal, Micro-prismatic                                                                                                                             | <b>MacAdam Ellipse</b>         | 3 SDCM                                                                                                          |
| <b>Power</b>         | 26 W                  | <b>Optic (2nd)</b>       | O                                                                                                                                                 | <b>Lifetime L90B10 (hours)</b> | > 23,000                                                                                                        |
| <b>Lumen</b>         | 1986 - 2191 lm        | <b>Optic (2nd) value</b> | Opal                                                                                                                                              | <b>Lifetime L80B10 (hours)</b> | > 45,000                                                                                                        |
| <b>Efficacy</b>      | 76 - 84 lm/W          | <b>CCT / CRI</b>         | 3000K CRI80, 4000K CRI80                                                                                                                          | <b>Lifetime L80B50 (hours)</b> | > 50,000                                                                                                        |
| <b>Driver option</b> | Integral control gear | <b>Dimming type</b>      | On/Off, DALI                                                                                                                                      | <b>Variants (On/Off, DALI)</b> | Compatible with EN/ IEC 60598-2-22: Suitable for emergency installations as central supply, non-maintained (Z0) |
| <b>Driver</b>        | Constant current (CC) | <b>Product colours</b>   | Black, White, Matt Silver, Concrete - Urban, Softscape - Urban, Stone - Urban, Corten - Urban, Oak - Woodland, Walnut - Woodland, Pine - Woodland |                                |                                                                                                                 |
| <b>Input voltage</b> | 220-240 V 50/60 Hz    | <b>Weight</b>            | 2.61 kg.                                                                                                                                          |                                |                                                                                                                 |

NYB-80782-SU



**Accessories**



Continuous-coupler bracket  
(40/50 mm Down profile)  
**A81881**



DALI Control System  
**Control-DALI**