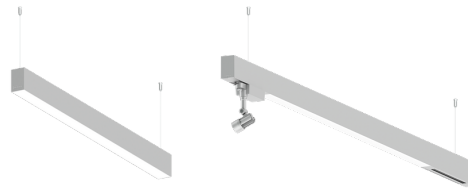


**NYBRO 10 (NYB-90213)**



**Product description**

Down - 60x80 mm - 890 mm



**Luminaire Structure**

- Die-cast aluminium end-caps and extruded aluminium profile with powder coating
- Stainless steel fasteners in grade 316
- Single cable entry
- Suspension kit is stainless steel 304 grade, adjustable, suspension (1.5 m) complete with electrical wires in white for mounting
- PMMA diffuser with Opal (UGR <19) and micro prismatic (UGR <13) options for better glare control

- Durable silicone rubber gasket
- Up and downlight distribution options
- Passive thermal management
- Integral control gear
- Wireless control available through Bluetooth connection

- Daylight and occupancy sensor options
- Emergency module (1 or 3 hours) is available upon request with 3 options (BASIC, SELF-TEST, PRO-DALI)
- Track can be integrated into NYBRO products upon request and upon receipt of design drawings

**Optic**



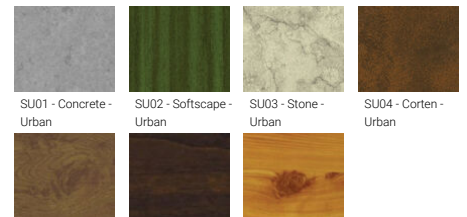
P

**Product colour**



01 - Black (RAL 9011)    03 - White (RAL 9003)    05 - Matt Silver (RAL 9006)

**Special finishes upon request**



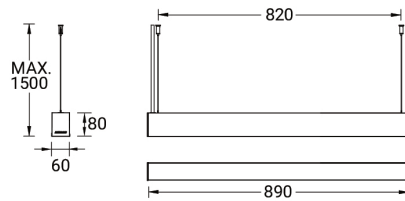
SU01 - Concrete - Urban    SU02 - Softscape - Urban    SU03 - Stone - Urban    SU04 - Corten - Urban  
 SW01 - Oak - Woodland    SW02 - Walnut - Woodland    SW03 - Pine - Woodland

**NYBRO 10 (NYB-90213)**

**Technical information**

<b>Material</b>	Aluminium	<b>Driver</b>	Constant current (CC)	<b>Product colours</b>	Black, White, Matt Silver, Concrete - Urban, Softscape - Urban, Stone - Urban, Corten - Urban, Oak - Woodland, Walnut - Woodland, Pine - Woodland
<b>Light source</b>	108 LED	<b>Input voltage</b>	220-240 V 50/60 Hz		
<b>Power</b>	29 W	<b>Optic</b>	O, P	<b>Weight</b>	2.90 kg
<b>Lumen</b>	2515 - 3161 lm	<b>Optic value</b>	Opal, Micro-prismatic		
<b>Efficacy</b>	87 - 109 lm/W	<b>CCT / CRI</b>	3000K CRI80, 4000K CRI80	<b>Operating temperature</b>	-20 °C to 40 °C
<b>Driver option</b>	Integral control gear	<b>Dimming type</b>	On/Off, 1-10V, DALI		
				<b>Variants (On/Off, 1-10V, DALI)</b>	Compatible with EN/ IEC 60598-2-22: Suitable for emergency installations as central supply, non-maintained (Z0)

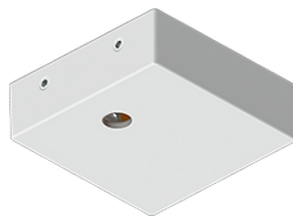
NYB-90213



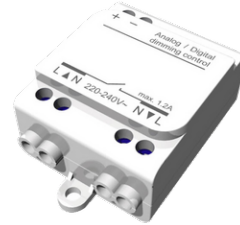
**Accessories**



Continuous-coupler bracket (60/70 mm Down & 60 mm Down & Up profile)  
**A81581**



Supply cable surface mounting box  
**A80981**



Wireless bluetooth converter  
**A90291**



Xpress wireless switch  
**A90591**



Integrated track - 3 phase - DALI for NYBRO  
**A81491**



Integrated track - 3 phase - On-off for NYBRO  
**A81391**



DALI Control System  
**Control-DALI**