

**ODESSA 2 (OD-21038)**



**Product description**

Medium - Supplied with specific 8 m cylindrical, tapered galvanised steel pole: SPT180176-OD



**Luminaire Structure**

- Die-cast aluminium housing
- Pre-treated before powder coating ensuring high corrosion resistance
- Single cable entry
- One cable gland supplied with 2 m of 3x1.0 sqmm outdoor cable

- Stainless steel fasteners in grade 304 with zinc flake coating (ZFC)
- Durable silicone rubber gasket
- High-efficiency PMMA lens
- Clear toughened glass

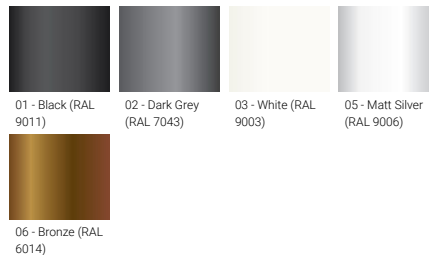
- Integral control gear
- Maximum wind load resistance is 160 km/h
- RGBW available upon request

**Optic**

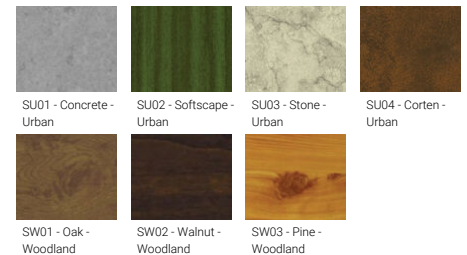


VN

**Product colour**



**Special finishes upon request**



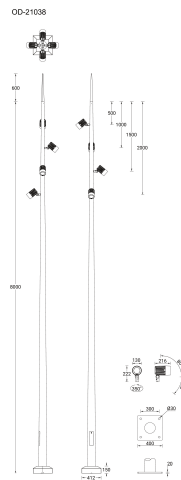
**ODESSA 2 (OD-21038)**

**Technical information**

<b>Material</b>	Aluminium
<b>Light source</b>	4 x 3 LED
<b>Power</b>	108 W
<b>Lumen</b>	6816 - 8020 lm
<b>Efficacy</b>	63 - 74 lm/W
<b>Driver option</b>	Integral control gear
<b>Driver</b>	Constant current (CC)
<b>Input voltage</b>	220-240 V 50/60 Hz
<b>Optic</b>	VN

<b>Optic value</b>	8°
<b>CCT / CRI</b>	3000K CRI80, 4000K CRI80
<b>Bug</b>	B2-U0-G0, B3-U0-G0
<b>ULR</b>	0%
<b>ULOR</b>	0%
<b>CIE flux code n°3</b>	100
<b>Dimming type</b>	On/Off
<b>Product colours</b>	Black, Dark Grey, White, Matt Silver, Bronze, Concrete - Urban, Softscape - Urban, Stone - Urban, Corten - Urban, Oak - Woodland, Walnut - Woodland, Pine - Woodland
<b>Weight</b>	90.4 kg

<b>Operating temperature</b>	-20 °C to 40 °C
<b>Cable</b>	One cable gland supplied with 2 m of 3x1.0 sqmm outdoor cable
<b>Through wiring</b>	Single cable entry
<b>Lens / Reflector / Optic</b>	High-efficiency PMMA lens, Clear toughened glass
<b>MacAdam Ellipse</b>	3 SDCM
<b>Lifetime L90B10 (hours)</b>	> 109,000
<b>Lifetime L80B10 (hours)</b>	> 109,000
<b>Lifetime L80B50 (hours)</b>	> 109,000



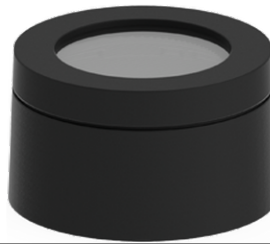
**Accessories**



Anti-glare visor  
**A80131**



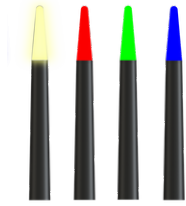
Anti-glare louvre  
**A80231**



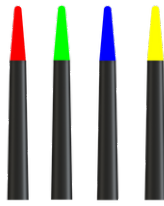
Linear spread lens  
**A80114**



Root mount kit  
**A21191**

**ODESSA 2 (OD-21038)**

Illuminated Beacon-Tip (White  
CCT or Single Colour)  
**A21381**



Illuminated Beacon-Tip (RGBW)  
**A21481**



8 m - Cylindrical, tapered  
galvanised steel pole for  
ODESSA  
**SPT180176-OD**

Please contact the factory for technical details if you wish to use Anti-glare accessories, Colour filters, Lenses and slip glasses in combination.