

OULU 8 (OUL-81112)



Product description

Down (Optic) & Up (Optic 2nd) - 22.5° - R2000 - RGBW



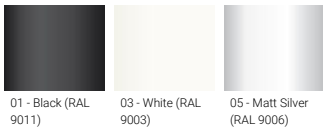
Luminaire Structure

- Die-cast aluminium end-caps and extruded aluminium bended profile with powder coating
- Multiple angles available
- Stainless steel fasteners in grade 316
- Steel brackets for ceiling down mounting option

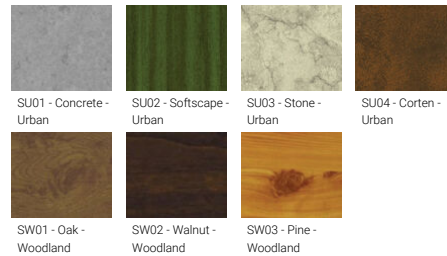
- Opal PMMA diffuser (UGR <19) for glare control
- Up and down light distribution options
- Passive thermal management
- Integral control gear

- Remote driver is included for dimming type: 1-10V (-DI)
- Wireless control available through Bluetooth connection

Product colour



Special finishes upon request

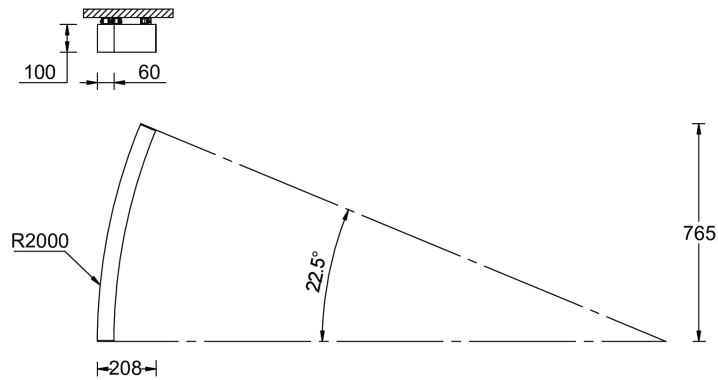


OULU 8 (OUL-81112)

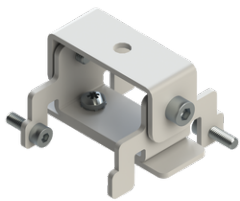
Technical information

Material	Aluminium	Driver	Constant current (CC)	Dimming type	DMX/RDM
Light source	192 & 192 LED	Input voltage	220-240 V 50/60 Hz	Product colours	Black, White, Matt Silver, Concrete - Urban, Softscape - Urban, Stone - Urban, Corten - Urban, Oak - Woodland, Walnut - Woodland, Pine - Woodland
Power	26 W	Optic	0		
Lumen	1462 - 1507 lm	Optic value	Opal	Weight	2.4 kg
Efficacy	56 - 58 lm/W	Optic (2nd) value	Opal	Operating temperature	-20 °C to 40 °C
Driver option	Integral control gear	CCT / CRI	RGBW30, RGBW40	Variants (DMX/RDM)	Compatible with EN/ IEC 60598-2-22: Suitable for emergency installations as central supply, non-maintained (ZO)

OUL-81112



Accessories



Ceiling-mounting bracket (40 mm profile)
A81381



Continuous-coupler bracket
A81781



Xpress wireless switch
A90591



Recessing box
A61051

OULU 8 (OUL-81112)



DALI Control System
Control-DALI
