

OULU 8 (OUL-81122)**Product description**

Down (Optic) & Up (Optic 2nd) - 22.5° - R2500 - RGBW

**Luminaire Structure**

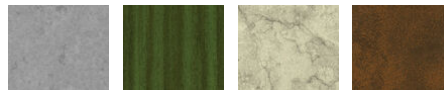
- Die-cast aluminium end-caps and extruded aluminium bended profile with powder coating
- Multiple angles available
- Stainless steel fasteners in grade 316
- Steel brackets for ceiling down mounting option

- Opal PMMA diffuser (UGR <19) for glare control
- Up and down light distribution options
- Passive thermal management
- Integral control gear

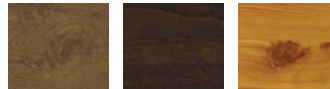
- Remote driver is included for dimming type: 1-10V (-DI)
- Wireless control available through Bluetooth connection

Product colour

01 - Black (RAL 9011) 03 - White (RAL 9003) 05 - Matt Silver (RAL 9006)

Special finishes upon request

SU01 - Concrete - Urban SU02 - Softscape - Urban SU03 - Stone - Urban SU04 - Corten - Urban



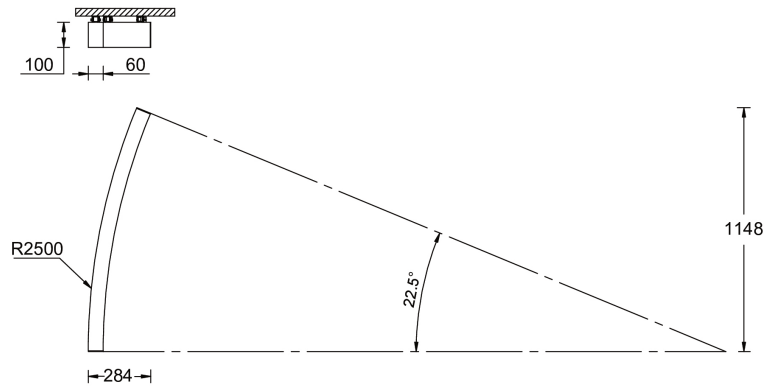
SW01 - Oak - Woodland SW02 - Walnut - Woodland SW03 - Pine - Woodland

OULU 8 (OUL-81122)

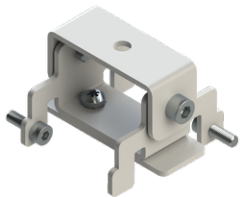
Technical information

Material	Aluminium	Driver	Constant current (CC)	CCT / CRI	RGBW30, RGBW40
Light source	240 & 240 LED	Input voltage	220-240 V 50/60 Hz	Dimming type	DMX/RDM
Power	31 W	Optic	O	Product colours	Black, White, Matt Silver, Concrete - Urban, Softscape - Urban, Stone - Urban, Corten - Urban, Oak - Woodland, Walnut - Woodland, Pine - Woodland
Lumen	1743 - 1797 lm	Optic value	Opal		
Efficacy	56 - 58 lm/W	Optic (2nd)	O		
Driver option	Integral control gear	Optic (2nd) value	Opal	Weight	3.0 kg
				Operating temperature	-20 °C to 40 °C
				Variants (DMX/RDM)	Compatible with EN/ IEC 60598-2-22: Suitable for emergency installations as central supply, non-maintained (Z0)

OUL-81122



Accessories



Ceiling-mounting bracket (40 mm profile)
A81381



Continuous-coupler bracket
A81781



Xpress wireless switch
A90591



Recessing box
A61051

OULU 8 (OUL-81122)



DALI Control System
Control-DALI