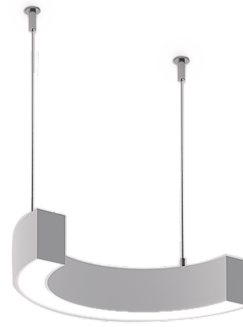


**OULU 9** (OUL-90002)**Product description**

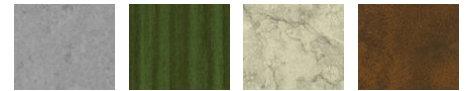
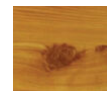
Down - 180° - R250 - TW

**Luminaire Structure**

- Remote driver (included)

**Optic**

0

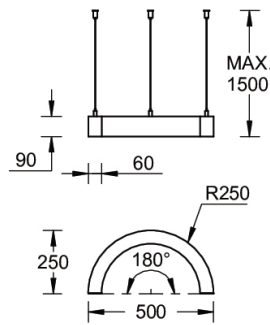
**Product colour**01 - Black (RAL  
9011)03 - White (RAL  
9003)05 - Matt Silver  
(RAL 9006)**Special finishes upon request**SU01 - Concrete -  
UrbanSU02 - Softscape -  
UrbanSU03 - Stone -  
UrbanSU04 - Corten -  
UrbanSW01 - Oak -  
WoodlandSW02 - Walnut -  
WoodlandSW03 - Pine -  
Woodland

**OULU 9** (OUL-90002)

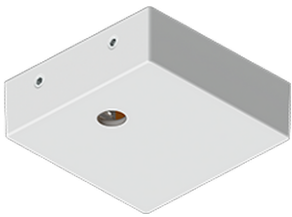
**Technical information**

<b>Material</b>	Aluminium	<b>Driver option</b>	Remote driver (included)	<b>Dimming type</b>	DALI
<b>Light source</b>	144 LED	<b>Driver</b>	Constant current (CC)	<b>Product colours</b>	Black, White, Matt Silver, Concrete - Urban, Softscape - Urban, Stone - Urban, Corten - Urban, Oak - Woodland, Walnut - Woodland, Pine - Woodland
<b>Power</b>	13 W	<b>Input voltage</b>	280 mA,	<b>Weight</b>	2.2 kg
<b>Lumen</b>	1234 lm	<b>Optic</b>	0	<b>Operating temperature</b>	-20 °C to 40 °C
<b>Efficacy</b>	95 lm/W	<b>CCT / CRI</b>	TW (2700K - 6500K)	<b>Variants (DALI)</b>	Compatible with EN/ IEC 60598-2-22: Suitable for emergency installations as central supply, non-maintained (Z0)

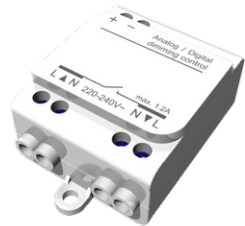
**Oulu 250**



**Accessories**



Supply cable surface mounting box  
**A80981**



Wireless bluetooth converter  
**A90291**



Xpress wireless switch  
**A90591**



DALI Control System  
**Control-DALI**