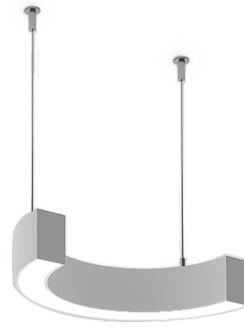


OULU 9 (OUL-90004)**Product description**

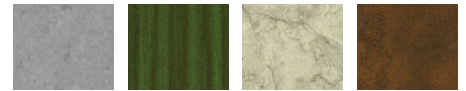
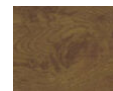
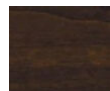
Down - 180° - R250 - RGBW DMX

**Luminaire Structure**

- Remote driver (included)

Optic

0

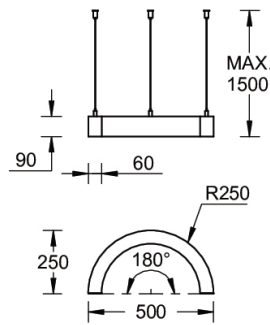
Product colour01 - Black (RAL
9011)03 - White (RAL
9003)05 - Matt Silver
(RAL 9006)**Special finishes upon request**SU01 - Concrete -
UrbanSU02 - Softscape -
UrbanSU03 - Stone -
UrbanSU04 - Corten -
UrbanSW01 - Oak -
WoodlandSW02 - Walnut -
WoodlandSW03 - Pine -
Woodland

OULU 9 (OUL-90004)

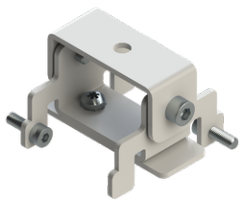
Technical information

Material	Aluminium	Driver option	Remote driver (included)	Dimming type	DMX, DMX/RDM
Light source	192 LED	Driver	Constant current (CC)	Product colours	Black, White, Matt Silver, Concrete - Urban, Softscape - Urban, Stone - Urban, Corten - Urban, Oak - Woodland, Walnut - Woodland, Pine - Woodland
Power	13 W	Input voltage	250 mA,		
Lumen	432 lm	Optic	0	Weight	2.2 kg
Efficacy	16 lm/W	CCT / CRI	RGBW40	Operating temperature	-20 °C to 40 °C
				Variants (DMX/RDM)	Compatible with EN/ IEC 60598-2-22: Suitable for emergency installations as central supply, non-maintained (Z0)

Oulu 250



Accessories



Ceiling-mounting bracket (40 mm profile)
A81381



Continuous-coupler bracket
A81781



Recessing box
A61051



DMX Control System
Control-DMX

OULU 9 (OUL-90004)



DMX/RDM Control System

Control-DMX-RDM