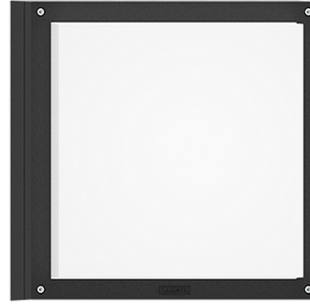


PALETTA 5 (PA-31942-1MS)



Product description

355x355 mm - With integrated motion sensor



Luminaire Structure

- Die-cast aluminium housing and frame
- Pre-treated before powder coating ensuring high corrosion resistance
- Two cable entries for through wiring

- Stainless steel fasteners in grade 304 with zinc flake coating (ZFC)
- Durable silicone rubber gasket
- Opal UV-stabilised polycarbonate diffuser

- Integral control gear
- Optional surface mounting box for easy wiring or conduit connection when wiring from behind is not possible

Optic



G

Product colour

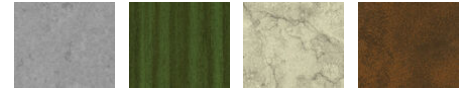


01 - Black (RAL 9011) 02 - Dark Grey (RAL 7043) 03 - White (RAL 9003) 05 - Matt Silver (RAL 9006)

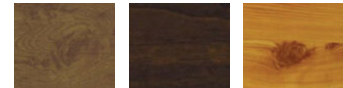


06 - Bronze (RAL 6014)

Special finishes upon request



SU01 - Concrete - Urban SU02 - Softscape - Urban SU03 - Stone - Urban SU04 - Corten - Urban



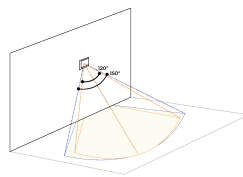
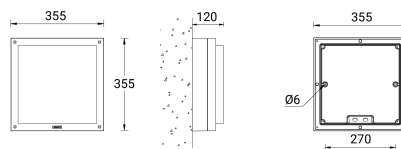
SW01 - Oak - Woodland SW02 - Walnut - Woodland SW03 - Pine - Woodland

PALETTA 5 (PA-31942-1MS)

Technical information

| | | | | | |
|----------------------|-----------------------|--------------------------|--|---------------------------------|---|
| Material | Aluminium | Optic value | 129°x129° | Through wiring | Two cable entries for through wiring |
| Light source | 96 LED | CCT / CRI | 3000K CRI80, 4000K CRI80 | Lens / Reflector / Optic | Opal UV-stabilised polycarbonate diffuser |
| Power | 27 W | Bug | B1-U2-G1 | MacAdam Ellipse | 3 SDCM |
| Lumen | 2362 - 2486 lm | ULR | 6% | Lifetime L90B10 (hours) | > 15,000 |
| Efficacy | 87 - 92 lm/W | ULOR | 6% | Lifetime L80B10 (hours) | > 30,000 |
| Driver option | Integral control gear | CIE flux code n°3 | 92 | Lifetime L80B50 (hours) | > 34,000 |
| Driver | Constant current (CC) | Dimming type | On/Off, 1-10V | Variants (1-10V) | Compatible with EN/ IEC 60598-2-22: Suitable for emergency installations as central supply, non-maintained (Z0) |
| Input voltage | 220-240 V 50/60 Hz | Product colours | Black, Dark Grey, White, Matt Silver, Bronze, Concrete - Urban, Softscape - Urban, Stone - Urban, Corten - Urban, Oak - Woodland, Walnut - Woodland, Pine - Woodland | | |
| Optic | G | Weight | 4.8 kg | | |

PA-31942-1MS



PALETTA

- Motion sensor - MicroWave - 1-10V**
Adjustable sensor (10 seconds - 15 min.)
100° Sensitivity
Sensor detection area: 3.7 - 4.6m
- Motion sensor - MicroWave - On/Off**
Adjustable sensor (5 seconds - 30 min.)
100° Sensitivity
Sensor detection area: 3.0 - 3.6m

Accessories



Surface mounting box for easy cabling (PALETTA 5)
SCE-PALETTA-5



DALI Control System
Control-DALI



Remote controller for the motion sensor - 1-10V (A34191)
A34391