

**PALETTA 4 (PA-31953)**



**Product description**

345x190 mm - TW



**Luminaire Structure**

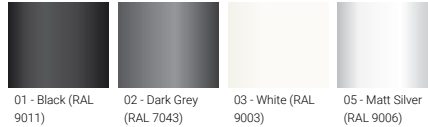
- Die-cast aluminium housing and frame
- Pre-treated before powder coating ensuring high corrosion resistance
- Two cable entries for through wiring
- Stainless steel fasteners in grade 304 with zinc flake coating (ZFC)
- Durable silicone rubber gasket
- Opal UV-stabilised polycarbonate diffuser
- Integral control gear
- Optional surface mounting box for easy wiring or conduit connection when wiring from behind is not possible

**Optic**

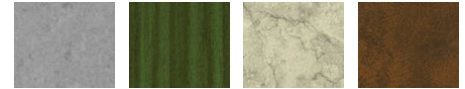


G

**Product colour**



**Special finishes upon request**

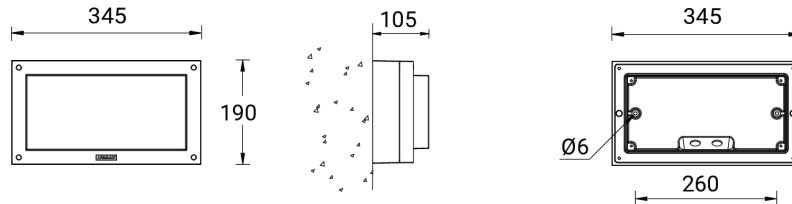


**PALETTA 4 (PA-31953)**

**Technical information**

<b>Material</b>	Aluminium	<b>Input voltage</b>	220-240 V 50/60 Hz	<b>CIE flux code n°3</b>	90
<b>Light source</b>	192 LED	<b>Optic</b>	G	<b>Dimming type</b>	DALI
<b>Power</b>	16 W	<b>Optic value</b>	134°x122°	<b>Product colours</b>	Black, Dark Grey, White, Matt Silver, Bronze, Concrete - Urban, Softscape - Urban, Stone - Urban, Corten - Urban, Oak - Woodland, Walnut - Woodland, Pine - Woodland
<b>Lumen</b>	1445 lm	<b>CCT / CRI</b>	TW (2700K - 6500K)		
<b>Efficacy</b>	90 lm/W	<b>Bug</b>	B1-U3-G1		
<b>Driver option</b>	Integral control gear	<b>ULR</b>	7.5%	<b>Weight</b>	3.1 kg
<b>Driver</b>	Constant current (CC)	<b>ULOR</b>	7.5%	<b>Through wiring</b>	Two cable entries for through wiring
				<b>Lens / Reflector / Optic</b>	Opal UV-stabilised polycarbonate diffuser

**PA-31953**



**Accessories**



Surface mounting box for easy  
cabling (PALETTA 4)  
**SCE-PALETTA-4**