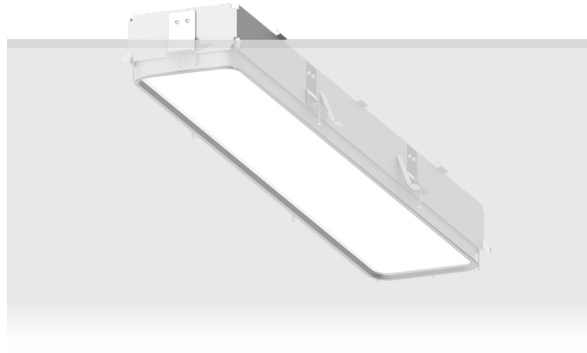


PITTSFIELD 1 (PIT-80005)



Product description

Down - 730 mm - RGBW DMX



Luminaire Structure

- Extruded aluminium bended profile with powder coating
- Stainless steel fasteners in grade 316
- Stainless steel brackets and screws for mounting
- PMMA diffuser with Opal (UGR <19) and micro prismatic (UGR <13) options for better glare control

- Up and down light distribution options
- Passive thermal management
- Integral control gear
- Wireless control available through Bluetooth connection

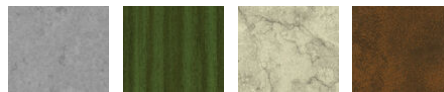
- Daylight and occupancy sensor options
- Emergency module (1 or 3 hours) is available upon request with 3 options (BASIC, SELF-TEST, PRO-DALI)

Product colour

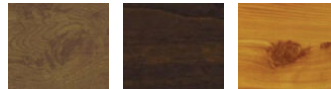


01 - Black (RAL 9011) 03 - White (RAL 9003) 05 - Matt Silver (RAL 9006)

Special finishes upon request



SU01 - Concrete - Urban SU02 - Softscape - Urban SU03 - Stone - Urban SU04 - Corten - Urban



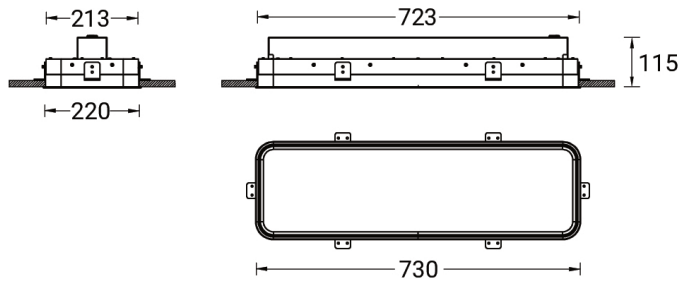
SW01 - Oak - Woodland SW02 - Walnut - Woodland SW03 - Pine - Woodland

PITTSFIELD 1 (PIT-80005)

Technical information

Material	Aluminium	Driver option	Integral control gear	Weight	3.7 kg
Light source	1152 LED	Driver	Constant current (CC)	Operating temperature	-20 °C to 40 °C
Power	36 W	Input voltage	220-240 V 50/60 Hz	VARIANTS	Compatible with EN/ IEC 60598-2-22: Suitable for emergency installations as central supply, non-maintained (Z0)
Lumen	1360 lm	CCT / CRI	RGBW40		
Efficacy	38 lm/W	Product colours	Black, White, Matt Silver, Concrete - Urban, Softscape - Urban, Stone - Urban, Corten - Urban, Oak - Woodland, Walnut - Woodland, Pine - Woodland		

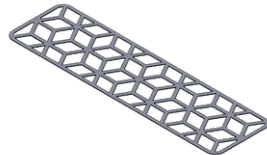
PIT-80005



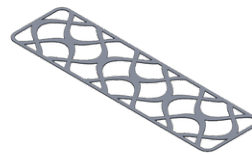
Accessories



Decorative pattern - Type A for PITTSFIELD 720 mm
A91921



Decorative pattern - Type B for PITTSFIELD 720 mm
A93321



Decorative pattern - Type C for PITTSFIELD 720 mm
A94721



DMX Control System
Control-DMX



DMX/RDM Control System
Control-DMX-RDM