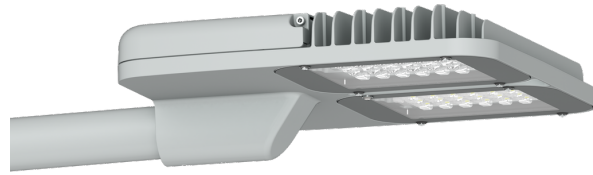


POWERMISSION 3 (PO39-GP055)**Luminaire Structure**

- Clear toughened glass

- Integral control gear

Optic

T2

T3

T4

ME

Product colour

01 - Black (RAL 9011)

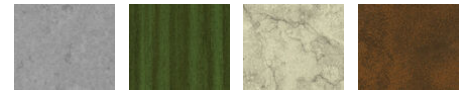
02 - Dark Grey (RAL 7043)

03 - White (RAL 9003)

05 - Matt Silver (RAL 9006)



06 - Bronze (RAL 6014)

Special finishes upon request

SU01 - Concrete - Urban

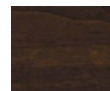
SU02 - Softscape - Urban

SU03 - Stone - Urban

SU04 - Corten - Urban



SW01 - Oak - Woodland



SW02 - Walnut - Woodland



SW03 - Pine - Woodland

POWERMISSION 3 (PO39-GP055)
Technical information

Material	Aluminium	Input voltage	220-240 V 50/60 Hz	Operating temperature	-20 °C to 40 °C
Light source	48 LED	Optic	T2, T3, T4, ME	Lens / Reflector / Optic	Clear toughened glass
Power	54 W	Optic value	142°x46°, 140°x69°, 99°x76°, 136°x41°	MacAdam Ellipse	3 SDCM
Lumen	5843 - 6531 lm	CCT / CRI	3000K CRI80, 4000K CRI80	Lifetime L90B10 (hours)	> 90,000
Efficacy	79 - 88 lm/W	Dimming type	On/Off, 1-10V, DALI	Lifetime L80B10 (hours)	> 90,000
Driver option	Integral control gear	Product colours	Black, Dark Grey, White, Matt Silver, Bronze, Concrete - Urban, Softscape - Urban, Stone - Urban, Corten - Urban, Oak - Woodland, Walnut - Woodland, Pine - Woodland	Lifetime L80B50 (hours)	> 90,000
Driver	Constant current (CC)	Weight	10.6 kg		