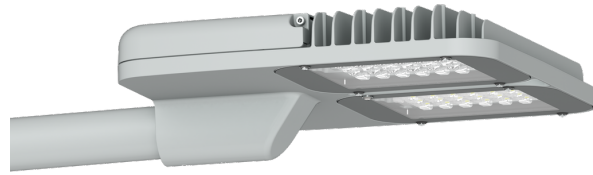


**POWERMISSION 3 (PO39-GP080)****Luminaire Structure**

- Clear toughened glass

- Integral control gear

**Optic**

T2

T3

T4

ME

**Product colour**

01 - Black (RAL 9011)

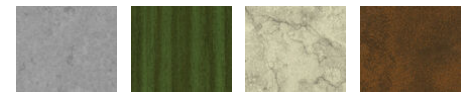
02 - Dark Grey (RAL 7043)

03 - White (RAL 9003)

05 - Matt Silver (RAL 9006)



06 - Bronze (RAL 6014)

**Special finishes upon request**

SU01 - Concrete - Urban

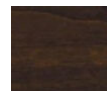
SU02 - Softscape - Urban

SU03 - Stone - Urban

SU04 - Corten - Urban



SW01 - Oak - Woodland



SW02 - Walnut - Woodland



SW03 - Pine - Woodland

**POWERMISSION 3 (PO39-GP080)**
**Technical information**

<b>Material</b>	Aluminium	<b>Input voltage</b>	220-240 V 50/60 Hz	<b>Operating temperature</b>	-20 °C to 40 °C
<b>Light source</b>	48 LED	<b>Optic</b>	T2, T3, T4, ME	<b>Lens / Reflector / Optic</b>	Clear toughened glass
<b>Power</b>	78 W	<b>Optic value</b>	143°x54°, 142°x69°, 99°x78°, 138°x37°	<b>MacAdam Ellipse</b>	3 SDCM
<b>Lumen</b>	8178 - 9165 lm	<b>CCT / CRI</b>	3000K CRI80, 4000K CRI80	<b>Lifetime L90B10 (hours)</b>	> 90,000
<b>Efficacy</b>	78 - 87 lm/W	<b>Dimming type</b>	On/Off, 1-10V, DALI	<b>Lifetime L80B10 (hours)</b>	> 90,000
<b>Driver option</b>	Integral control gear	<b>Product colours</b>	Black, Dark Grey, White, Matt Silver, Bronze, Concrete - Urban, Softscape - Urban, Stone - Urban, Corten - Urban, Oak - Woodland, Walnut - Woodland, Pine - Woodland	<b>Lifetime L80B50 (hours)</b>	> 90,000
<b>Driver</b>	Constant current (CC)	<b>Weight</b>	10.6 kg		