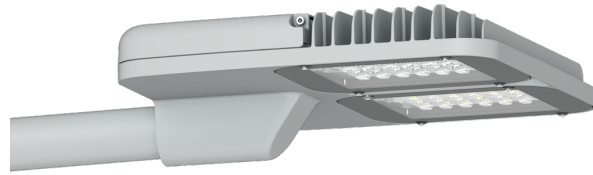


POWERMISSION 3 (PO39-LM162)**Luminaire Structure**

- Clear toughened glass

- Integral control gear

Optic

T2

T3

T4

ME

Product colour

01 - Black (RAL 9011)

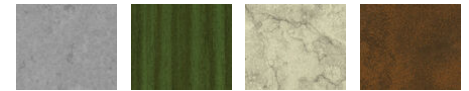
02 - Dark Grey (RAL 7043)

03 - White (RAL 9003)

05 - Matt Silver (RAL 9006)



06 - Bronze (RAL 6014)

Special finishes upon request

SU01 - Concrete - Urban

SU02 - Softscape - Urban

SU03 - Stone - Urban

SU04 - Corten - Urban



SW01 - Oak - Woodland



SW02 - Walnut - Woodland



SW03 - Pine - Woodland

POWERMISSION 3 (PO39-LM162)

Technical information

Material	Aluminium	Driver	Constant current (CC)	Product colours	Black, Dark Grey, White, Matt Silver, Bronze, Concrete - Urban, Softscape - Urban, Stone - Urban, Corten - Urban, Oak - Woodland, Walnut - Woodland, Pine - Woodland
Light source	48 LED	Input voltage	220-240 V 50/60 Hz	Weight	10.6 kg
Power	154 W	Optic	T2, T3, T4, ME	Operating temperature	-20 °C to 40 °C
Lumen	15062 - 16827 lm	Optic value	145°x54°, 138°x73°, 96°x75°, 140°x58°	Lens / Reflector / Optic	Clear toughened glass
Efficacy	193 - 216 lm/W	CCT / CRI	3000K CRI80, 4000K CRI80	Variants (On/Off, DALI)	Compatible with EN/ IEC 60598-2-22: Suitable for emergency installations as central supply, non-maintained (Z0)
Driver option	Integral control gear	Dimming type	On/Off, 1-10V, DALI		