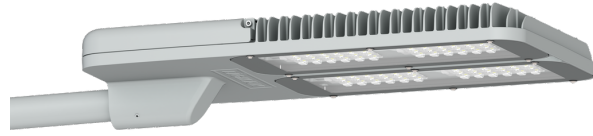


POWERMISSION 4 (PO49-GP165)**Luminaire Structure**

- Clear toughened glass

- Integral control gear

Optic

T2

T3

T4

ME

Product colour

01 - Black (RAL 9011)

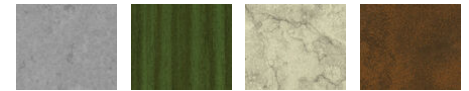
02 - Dark Grey (RAL 7043)

03 - White (RAL 9003)

05 - Matt Silver (RAL 9006)



06 - Bronze (RAL 6014)

Special finishes upon request

SU01 - Concrete - Urban

SU02 - Softscape - Urban

SU03 - Stone - Urban

SU04 - Corten - Urban



SW01 - Oak - Woodland



SW02 - Walnut - Woodland



SW03 - Pine - Woodland

POWERMISSION 4 (PO49-GP165)

Technical information

Material	Aluminium	Input voltage	220-240 V 50/60 Hz	Operating temperature	-20 °C to 40 °C
Light source	72 LED	Optic	T2, T3, T4, ME	Lens / Reflector / Optic	Clear toughened glass
Power	167 W	Optic value	143°x54°, 142°x69°, 99°x78°, 138°x37°	MacAdam Ellipse	3 SDCM
Lumen	13502 - 15724 lm	CCT / CRI	3000K CRI80, 4000K CRI80	Lifetime L90B10 (hours)	> 90,000
Efficacy	61 - 71 lm/W	Dimming type	On/Off, 1-10V, DALI	Lifetime L80B10 (hours)	> 90,000
Driver option	Integral control gear	Product colours	Black, Dark Grey, White, Matt Silver, Bronze, Concrete - Urban, Softscape - Urban, Stone - Urban, Corten - Urban, Oak - Woodland, Walnut - Woodland, Pine - Woodland	Lifetime L80B50 (hours)	> 90,000
Driver	Constant current (CC)	Weight	18.1 kg		