

PRAGUE 6 (PRA-10051)



Product description

200x80 mm - 1000 mm - 35.5 hours of operation time
 (2 Step dimming with motion sensor override) - 5.5 days of autonomy

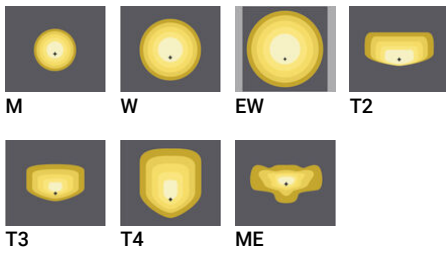


Luminaire Structure

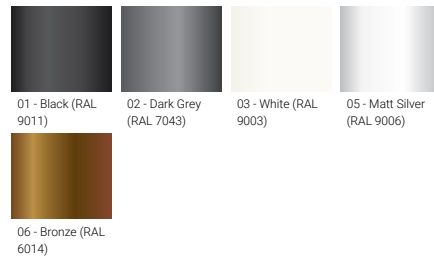
- Clear toughened glass
 - High-efficiency PMMA lens

- Integral control gear

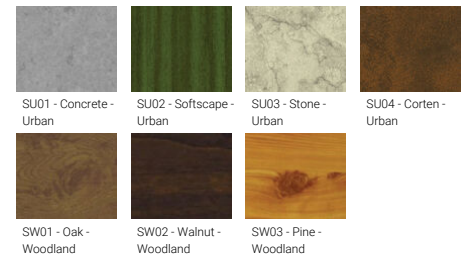
Optic



Product colour



Special finishes upon request



PRAGUE 6 (PRA-10051)

Technical information

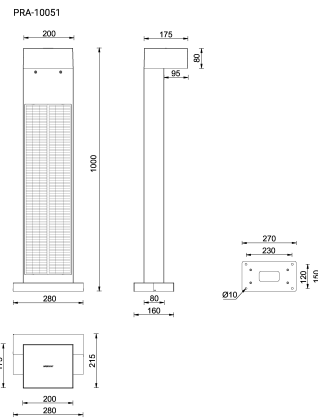
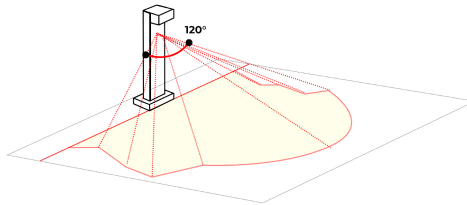
Material	Aluminium
Light source	2 x 4 LED
Power	2 W
Lumen	198 - 241 lm
Efficacy	99 - 121 lm/W
Driver option	Integral control gear
Driver	Constant current (CC)

Input voltage	SOLAR
Optic	M, W, EW, T2, T3, T4, ME
Optic value	30°, 56°, 110°x103°, 139°x55°, 123°x85°, 105°x69°, 139°x60°
CCT / CRI	3000K CRI80, 4000K CRI80
Dimming type	Dusk to Dawn, 2 Step dimming with motion sensor override, Solar Custom

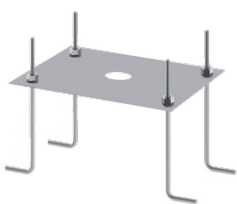
Operating temperature	-20 °C to 40 °C
Lens / Reflector / Optic	Clear toughened glass, High-efficiency PMMA lens
MacAdam Ellipse	3 SDCM
Lifetime L90B10 (hours)	> 90,000
Lifetime L80B10 (hours)	> 90,000
Lifetime L80B50 (hours)	> 90,000

Product colours	Black, Dark Grey, White, Matt Silver, Bronze, Concrete - Urban, Softscape - Urban, Stone - Urban, Corten - Urban, Oak - Woodland, Walnut - Woodland, Pine - Woodland
Weight	16.2 kg

PRAGUE
Adjustable sensor (10 - 150 seconds)
120° sensitivity
Sensor detection area: 7 - 10 m



Accessories



Anchor bolt
A13791



Remote solar charge controller for Solar Integrated Post Top luminaire
A92291