

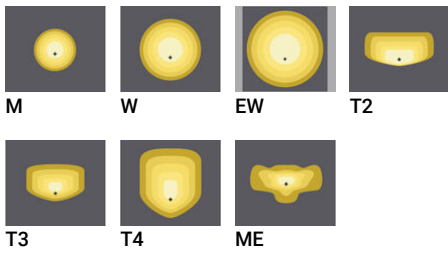
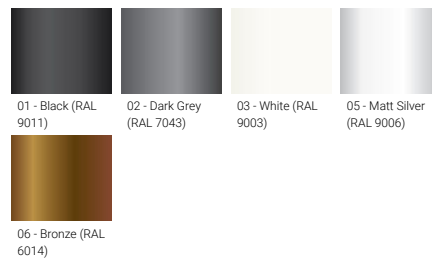
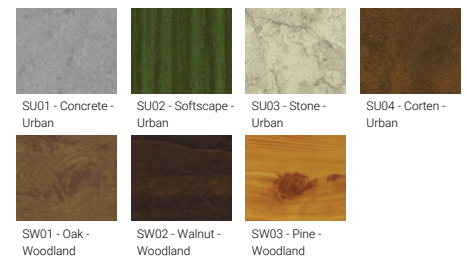
PRAGUE 6 (PRA-10052)**Product description**

200x80 mm - 1000 mm - 17.5 hours of operation time
 (2 Step dimming with motion sensor override) - 5 days
 of autonomy

**Luminaire Structure**

- Clear toughened glass
 - High-efficiency PMMA lens

- Integral control gear

Optic**Product colour****Special finishes upon request**

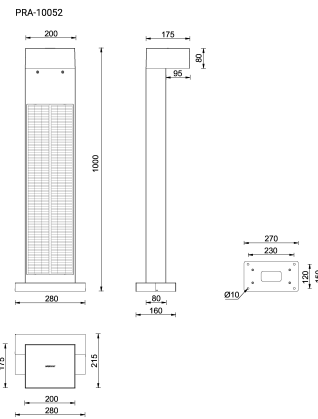
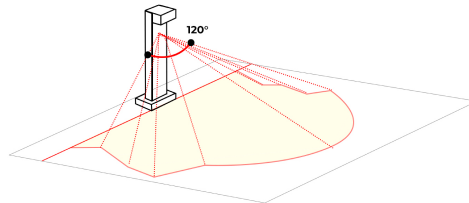
PRAGUE 6 (PRA-10052)

Technical information

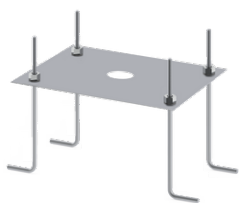
Material	Aluminium	Optic	M, W, EW, T2, T3, T4, ME	Lens / Reflector / Optic	Clear toughened glass, High-efficiency PMMA lens
Light source	2 x 4 LED	Optic value	30°, 56°, 110°x103°, 139°x55°, 123°x85°, 105°x69°, 139°x60°	MacAdam Ellipse	3 SDCM
Power	4 W	CCT / CRI	3000K CRI80, 4000K CRI80	Lifetime L90B10 (hours)	> 90,000
Lumen	398 - 495 lm	Dimming type	Dusk to Dawn, 2 Step dimming with motion sensor override, Solar Custom	Lifetime L80B10 (hours)	> 90,000
Efficacy	100 - 124 lm/W	Product colours	Black, Dark Grey, White, Matt Silver, Bronze, Concrete - Urban, Softscape - Urban, Stone - Urban, Corten - Urban, Oak - Woodland, Walnut - Woodland, Pine - Woodland	Lifetime L80B50 (hours)	> 90,000
Driver option	Integral control gear				
Driver	Constant current (CC)	Weight	16.2 kg		
		Operating temperature	-20 °C to 40 °C		

PRAGUE

Adjustable sensor (10 - 150 seconds)
120° sensitivity
Sensor detection area: 7 - 10 m



Accessories



Anchor bolt
A13791



Remote solar charge controller
for Solar Integrated Post Top
luminaire
A92291