

PRAGUE 7 (PRA-10061)



Product description

200x80 mm - 1000 mm - 35.5 hours of operation time
(2 Step dimming with motion sensor override) - 5.5 days of autonomy



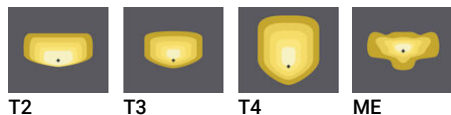
Luminaire Structure

- Die-cast aluminium housing
- Extruded aluminium column
- Pre-treated before powder coating ensuring high corrosion resistance
- Stainless steel fasteners in grade 304 with zinc flake coating (ZFC)
- Durable silicone rubber gasket
- Clear toughened glass
- High-efficiency PMMA lens
- Integral control gear

- Solar panel mono-crystalline silicon high-efficiency 4x10W
- Lithium Iron Phosphate (LiFePO4) battery 16.5Ah 12 VDC
- Solar charger controller system 12V 10A
- Luminaires operation time depends on the weather conditions
- Full automatic electronic protection function against short circuit, overcurrent, overload, overvoltage and high temperature
- Standard: Off-grid, 100% solar, not connected to the utility grid. Utility grid connection is available upon request
- Without any sun (Autonomy), the battery would last for a maximum 5 days
- Motion sensor integrated

- Different dimming options are available
- STD: 2 Step dimming with motion sensor override (3 hours: 60% without movement, 100% for 1 minute when the motion sensor activated. After 3 hours: 30% without movement, 60% for 1 minute when the motion sensor activated)
- ND: Dusk to Dawn, CT: Custom examples are 5 Step dimming, Custom hours, Custom dimming levels (Step length and minimum dim level is 10%)
- Maximum 35.5 hours of operation time (2 Step dimming with motion sensor override)
- Remote solar charge controller can be ordered as an accessory
- Autonomy and Operation time calculations are done with the following information: Peak Sun-Hour (PSH) is 3 hours. Hours of operation are 12 hours per day. Detection of movement is 5 times per hour.
- Autonomy and Operation time calculations are only indicative and will depend on several variable factors. Please contact the factory to determine the specific calculations for your project.

Optic



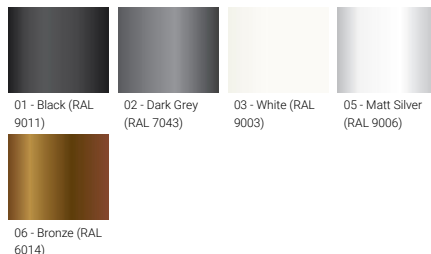
T2

T3

T4

ME

Product colour



01 - Black (RAL 9011)

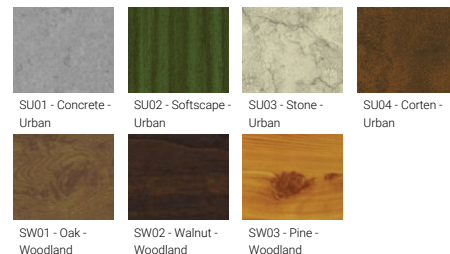
02 - Dark Grey (RAL 7043)

03 - White (RAL 9003)

05 - Matt Silver (RAL 9006)

06 - Bronze (RAL 6014)

Special finishes upon request



SU01 - Concrete - Urban

SU02 - Softscape - Urban

SU03 - Stone - Urban

SU04 - Corten - Urban

SW01 - Oak - Woodland

SW02 - Walnut - Woodland

SW03 - Pine - Woodland

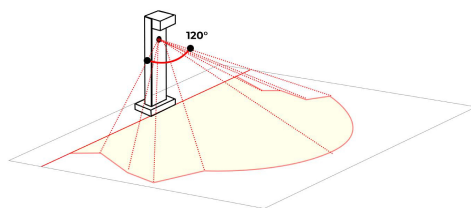
PRAGUE 7 (PRA-10061)

Technical information

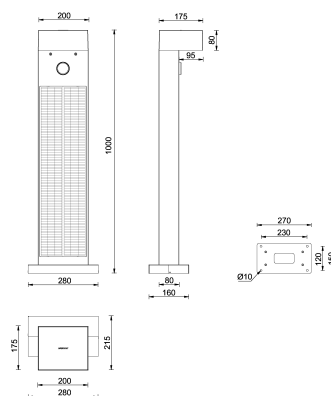
Material	Aluminium	Input voltage	Solar	Operating temperature	-20 °C to 40 °C
Light source	8 LED	Optic	T2, T3, T4, ME		Clear toughened glass,
Power	2 W	Optic value	139°x55°, 123°x85°, 105°x69°, 139°x60°	Lens / Reflector / Optic	High-efficiency PMMA lens
Lumen	198 - 222 lm	CCT / CRI	3000K CRI80, 4000K CRI80	MacAdam Ellipse	3 SDCM
Efficacy	99 - 111 lm/W	Dimming type	Dusk to Dawn, 2 Step dimming with motion sensor override, Solar Custom	Lifetime L90B10 (hours)	> 90,000
Driver option	Integral control gear			Lifetime L80B10 (hours)	> 90,000
Driver	Constant current (CC)			Lifetime L80B50 (hours)	> 90,000
		Product colours	Black, Dark Grey, White, Matt Silver, Bronze, Concrete - Urban, Softscape - Urban, Stone - Urban, Corten - Urban, Oak - Woodland, Walnut - Woodland, Pine - Woodland		
		Weight	16.2 kg		

PRAGUE

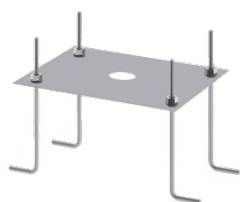
Adjustable sensor (10 - 150 seconds)
120° sensitivity
Sensor detection area: 7 - 10 m



PRA-10061



Accessories



Anchor bolt
A13791



Remote solar charge controller
for Solar Integrated Bollards and
Vertical Solar PV poles
A92691