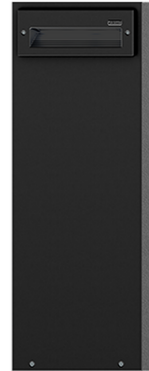


RADO 5 (RA-10822)



Product description

294x135 mm - 800 mm



Luminaire Structure

- Die-cast aluminium housing
- Formed sheet aluminium column
- Pre-treated before powder coating ensuring high corrosion resistance
- Single cable entry
- One IP68 connector supplied with 0.2 m of 3x1.0 sqmm outdoor cable
- Stainless steel fasteners in grade 304 with zinc flake coating (ZFC)
- Durable silicone rubber gasket
- Clear toughened glass
- Integral control gear

Optic



G

Product colour



Special finishes upon request



RADO 5 (RA-10822)

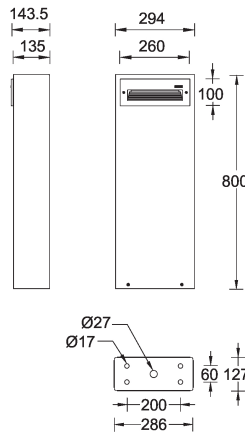
Technical information

Material	Aluminium
Light source	48 LED
Power	17 W
Lumen	402 - 587 lm
Efficacy	24 - 35 lm/W
Driver option	Integral control gear
Driver	Constant current (CC)
Input voltage	220-240 V 50/60 Hz
Optic	G

Optic value	23°x94°
CCT / CRI	2700K CRI80, 3000K CRI80, 4000K CRI80
Bug	B0-U1-G0, B0-U1-G1, B0-U2-G1
ULR	2%, 7%
ULOR	2%, 7%
CIE flux code n°3	81, 82
Dimming type	On/Off, 1-10V, DALI
Product colours	Black, Dark Grey, White, Matt Silver, Bronze, Concrete - Urban, Softscape - Urban, Stone - Urban, Corten - Urban, Oak - Woodland, Walnut - Woodland, Pine - Woodland
Weight	8.1 kg

Operating temperature	-20 °C to 40 °C
Cable	One IP68 connector supplied with 0.2 m of 3x1.0 sqmm outdoor cable
Through wiring	Single cable entry
Lens / Reflector / Optic	Clear toughened glass
MacAdam Ellipse	3 SDCM
Lifetime L90B10 (hours)	> 23,000
Lifetime L80B10 (hours)	> 45,000
Lifetime L80B50 (hours)	> 49,000
Variants (On/Off, 1-10V, DALI)	Compatible with EN/ IEC 60598-2-22: Suitable for emergency installations as central supply, non-maintained (Z0)

RA-10822

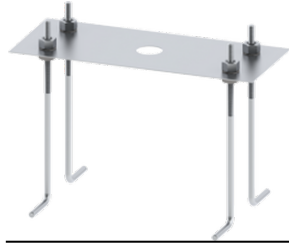


RADO 5 (RA-10822)

Accessory



DALI Control System
Control-DALI



Anchor bolt
A10991
