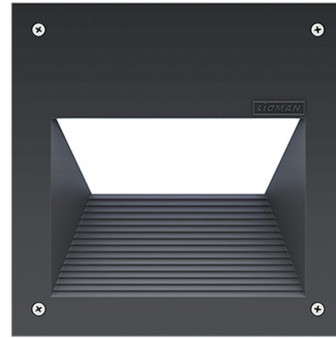


RADO 7 (RA-40702)



Product description

With recessing box



Luminaire Structure

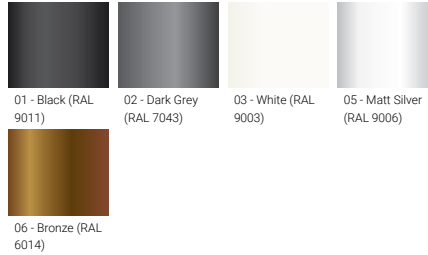
- Die-cast aluminium housing
- Pre-treated before powder coating ensuring high corrosion resistance
- Two cable entries for through wiring
- Stainless steel fasteners in grade 304 with zinc flake coating (ZFC)
- Durable silicone rubber gasket
- Clear toughened glass
- Integral control gear

Optic

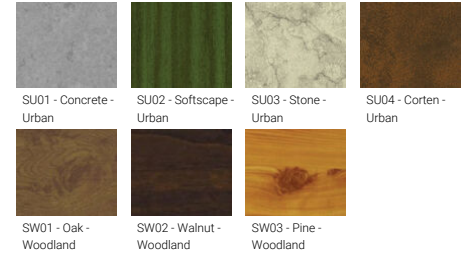


G

Product colour



Special finishes upon request



RADO 7 (RA-40702)

Technical information

Material	Aluminium	Input voltage	220-240 V 50/60 Hz	CIE flux code n°3	79
Light source	1 COB	Optic	G	Dimming type	On/Off
Power	38 W	Optic value	48°x75°	Product colours	Black, Dark Grey, White, Matt Silver, Bronze, Concrete - Urban, Softscape - Urban, Stone - Urban, Corten - Urban, Oak - Woodland, Walnut - Woodland, Pine - Woodland
Lumen	2082 - 2192 lm	CCT / CRI	3000K CRI80, 4000K CRI80		
Efficacy	55 - 58 lm/W	Bug	B0-U3-G3		
Driver option	Integral control gear	ULR	7.2%		
Driver	Constant current (CC)	ULOR	7.2%	Weight	6.5 kg
				Operating temperature	-20 °C to 40 °C
				Through wiring	Two cable entries for through wiring
				Lens / Reflector / Optic	Clear toughened glass

RA-40702

