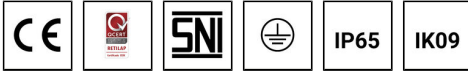
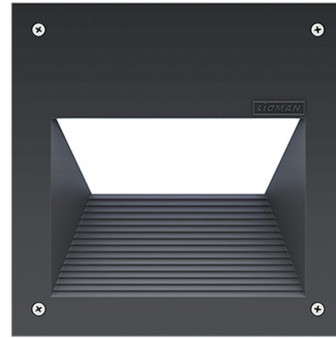


RADO 7 (RA-40711)



Product description

With locking clamp



Luminaire Structure

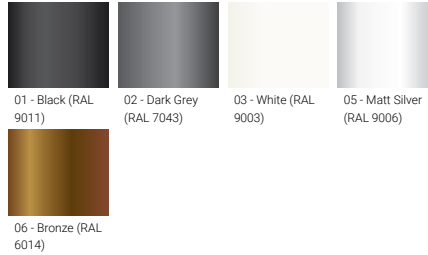
- Die-cast aluminium housing
- Pre-treated before powder coating ensuring high corrosion resistance
- Two cable entries for through wiring
- Stainless steel fasteners in grade 304 with zinc flake coating (ZFC)
- Durable silicone rubber gasket
- Clear toughened glass
- Integral control gear

Optic

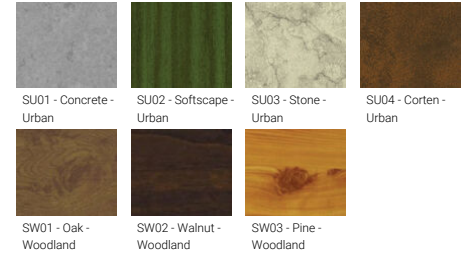


G

Product colour



Special finishes upon request

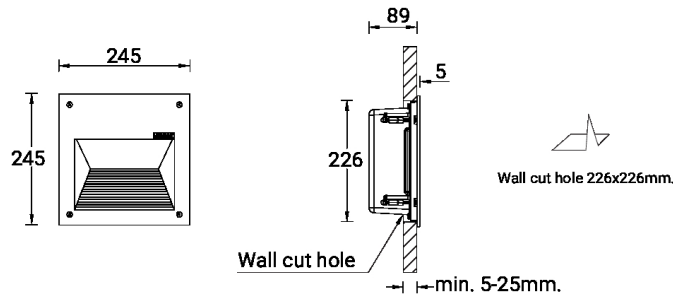


RADO 7 (RA-40711)

Technical information

Material	Aluminium	Optic	G	Product colours	Black, Dark Grey, White, Matt Silver, Bronze, Concrete - Urban, Softscape - Urban, Stone - Urban, Corten - Urban, Oak - Woodland, Walnut - Woodland, Pine - Woodland
Light source	1 COB	Optic value	42°x69°		
Power	20 W	CCT / CRI	3000K CRI80, 4000K CRI80	Weight	4.6 kg.
Lumen	1382 - 1399 lm	Bug	B0-U1-G2	Operating temperature	-20 °C to 40 °C
Efficacy	69 - 70 lm/W	ULR	1%	Through wiring	Two cable entries for through wiring
Driver option	Integral control gear	ULOR	1%	Lens / Reflector / Optic	Clear toughened glass
Driver	Constant current (CC)	CIE flux code n°3	81	MacAdam Ellipse	3 SDCM
Input voltage	220-240 V 50/60 Hz	Dimming type	On/Off, 1-10V, DALI	Lifetime L90B10 (hours)	> 61,000
				Variants (On/Off, 1-10V, DALI)	Compatible with EN/ IEC 60598-2-22: Suitable for emergency installations as central supply, non-maintained (Z0)

RA-40711



Accessories



DALI Control System
Control-DALI