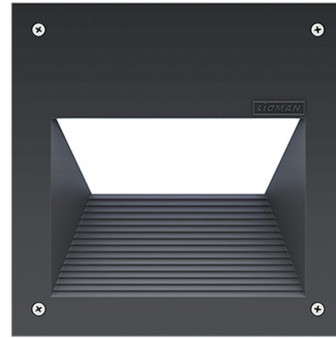


RADO 7 (RA-40712)



Product description

With locking clamp



Luminaire Structure

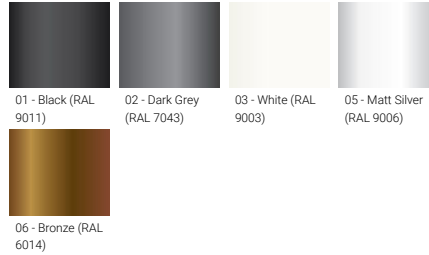
- Die-cast aluminium housing
- Pre-treated before powder coating ensuring high corrosion resistance
- Two cable entries for through wiring
- Stainless steel fasteners in grade 304 with zinc flake coating (ZFC)
- Durable silicone rubber gasket
- Clear toughened glass
- Integral control gear

Optic

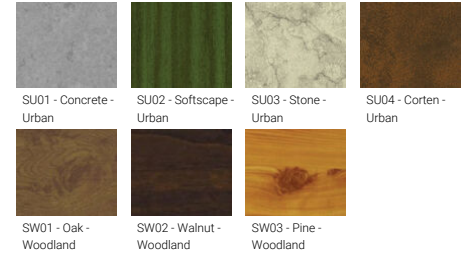


G

Product colour



Special finishes upon request



RADO 7 (RA-40712)

Technical information

Material	Aluminium
Light source	1 COB
Power	38 W
Lumen	2082 - 2192 lm
Efficacy	55 - 58 lm/W
Driver option	Integral control gear
Driver	Constant current (CC)

Input voltage	220-240 V 50/60 Hz
Optic	G
Optic value	48°x75°
CCT / CRI	3000K CRI80, 4000K CRI80
Bug	B0-U3-G3
ULR	7.2%
ULOR	7.2%

CIE flux code n°3	79
Dimming type	On/Off
Product colours	Black, Dark Grey, White, Matt Silver, Bronze, Concrete - Urban, Softscape - Urban, Stone - Urban, Corten - Urban, Oak - Woodland, Walnut - Woodland, Pine - Woodland
Weight	4.6 kg
Operating temperature	-20 °C to 40 °C
Through wiring	Two cable entries for through wiring
Lens / Reflector / Optic	Clear toughened glass

RA-40712

