

**SANDY 9 (SA-31553)**



**Product description**

Large - TW



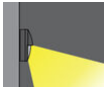
**Luminaire Structure**

- Die-cast aluminium housing and frame
- Pre-treated before powder coating ensuring high corrosion resistance
- Two cable entries for through wiring

- Stainless steel fasteners in grade 304 with zinc flake coating (ZFC)
- Durable silicone rubber gasket
- Opal UV-stabilised polycarbonate diffuser

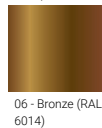
- Integral control gear
- Optional surface mounting box for easy wiring or conduit connection when wiring from behind is not possible

**Optic**

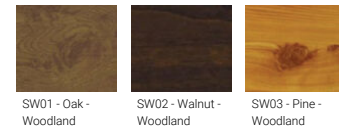
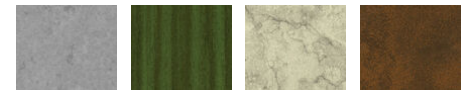


G

**Product colour**



**Special finishes upon request**

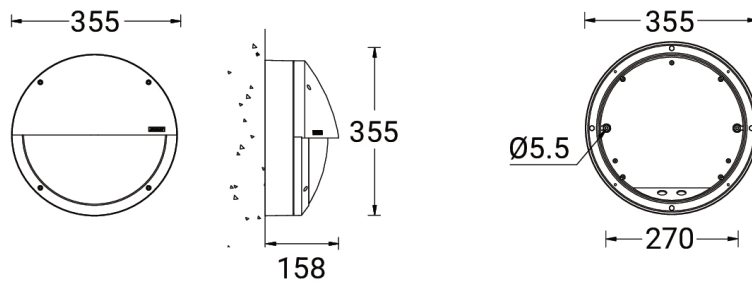


**SANDY 9 (SA-31553)**

**Technical information**

<b>Material</b>	Aluminium	<b>Input voltage</b>	220-240 V 50/60 Hz	<b>CIE flux code n°3</b>	92
<b>Light source</b>	192 LED	<b>Optic</b>	G	<b>Dimming type</b>	DALI
<b>Power</b>	28 W	<b>Optic value</b>	109°x119°	<b>Product colours</b>	Black, Dark Grey, White, Matt Silver, Bronze, Concrete - Urban, Softscape - Urban, Stone - Urban, Corten - Urban, Oak - Woodland, Walnut - Woodland, Pine - Woodland
<b>Lumen</b>	1181 lm	<b>CCT / CRI</b>	TW (2700K - 6500K)		
<b>Efficacy</b>	42 lm/W	<b>Bug</b>	B1-U2-G1		
<b>Driver option</b>	Integral control gear	<b>ULR</b>	2.79%		
<b>Driver</b>	Constant current (CC)	<b>ULOR</b>	2.79%	<b>Weight</b>	4.3 kg
				<b>Operating temperature</b>	-20 °C to 40 °C
				<b>Through wiring</b>	Two cable entries for through wiring
				<b>Lens / Reflector / Optic</b>	Opal UV-stabilised polycarbonate diffuser

**SA-31553**



**Accessories**



Surface mounting box for easy cabling (SANDY 9)  
**SCE-SANDY-9**