

VEKTER 6 (VK-90011)



Product description

2 sides



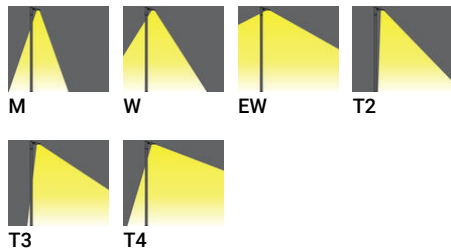
Luminaire Structure

- Die-cast aluminium housing
- Pre-treated before powder coating ensuring high corrosion resistance
- Single cable entry
- One cable gland supplied with 0.5 m of 3x1.0 sqmm outdoor cable

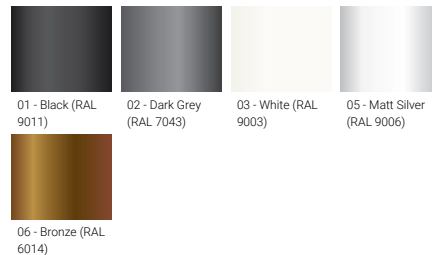
- Stainless steel fasteners in grade 304 with zinc flake coating (ZFC)
- Durable silicone rubber gasket
- Clear toughened glass
- High-efficiency PMMA lens

- Integral control gear
- Maximum wind load resistance is 140 km/h
- Surge protection 10kV

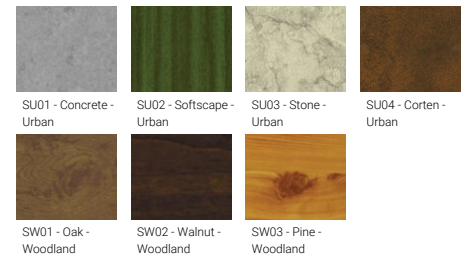
Optic



Product colour



Special finishes upon request

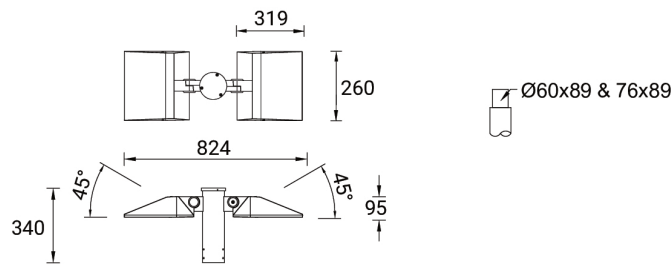


VEKTER 6 (VK-90011)

Technical information

Material	Aluminium	Optic value	32°, 52°, 117°, 140°x52°, 140°x72°, 97°x82°	Operating temperature	-20 °C to 40 °C
Light source	2 x 24 LED	CCT / CRI	3000K CRI80, 4000K CRI80	Cable	One cable gland supplied with 0.5 m of 3x1.0 sqmm outdoor cable
Power	74 W	Bug	B1-U0-G1, B2-U0-G0, B3-U0-G0	Through wiring	Single cable entry
Lumen	9018 - 10286 lm	ULR	0%	Lens / Reflector / Optic	Clear toughened glass, High-efficiency PMMA lens
Efficacy	122 - 139 lm/W	ULOR	0%	MacAdam Ellipse	3 SDCM
Driver option	Integral control gear	CIE flux code n°3	97, 98, 99	Lifetime L90B10 (hours)	> 90,000
Driver	Constant current (CC)	Dimming type	On/Off, 1-10V, DALI	Lifetime L80B10 (hours)	> 90,000
Input voltage	220-240 V 50/60 Hz	Product colours	Black, Dark Grey, White, Matt Silver, Bronze, Concrete - Urban, Softscape - Urban, Stone - Urban, Corten - Urban, Oak - Woodland, Walnut - Woodland, Pine - Woodland	Lifetime L80B50 (hours)	> 90,000
Optic	M, W, EW, T2, T3, T4			Variants (1-10V, DALI)	Compatible with EN/ IEC 60598-2-22: Suitable for emergency installations as central supply, non-maintained (ZO)
		Weight	13.2 kg		

VK-90011



Accessories



DALI Control System
Control-DALI