

LIGHT LINEAR VT 1 (VT-10001)



Product description

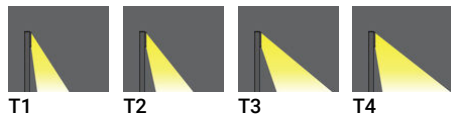
200x80 mm - 1000 mm - 1 side



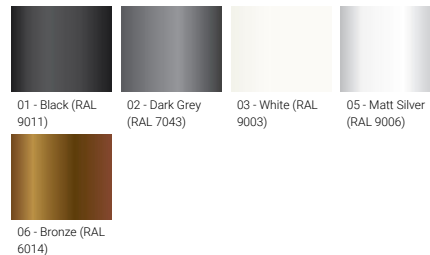
Luminaire Structure

- Die-cast aluminium housing and frame
- Extruded aluminium column
- Pre-treated before powder coating ensuring high corrosion resistance
- Single cable entry
- One IP68 connector supplied with 0.2 m of 3x1.0 sqmm outdoor cable
- Stainless steel fasteners in grade 304 with zinc flake coating (ZFC)
- Durable silicone rubber gasket
- Clear toughened glass
- High-efficiency PMMA lens
- Integral control gear

Optic



Product colour



Special finishes upon request

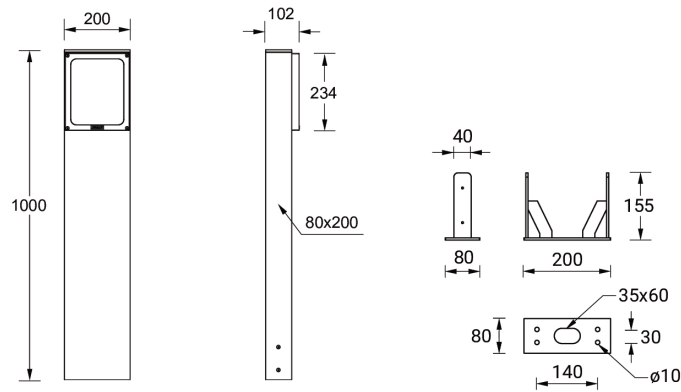


LIGHT LINEAR VT 1 (VT-10001)

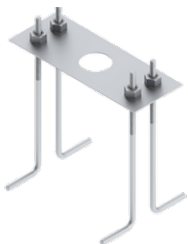
Technical information

Material	Aluminium	Optic value	105°x33°, 139°x37°, 99°x56°, 49°x24°	Cable	One IP68 connector supplied with 0.2 m of 3x1.0 sqmm outdoor cable
Light source	12 LED	CCT / CRI	3000K CRI80, 4000K CRI80	Through wiring	Single cable entry
Power	27 W	Bug	B0-U3-G2, B0-U3-G3	Lens / Reflector / Optic	Clear toughened glass, High-efficiency PMMA lens
Lumen	2052 - 2834 lm	ULOR	14%, 17%, 18%, 20%	MacAdam Ellipse	3 SDCM
Efficacy	76 - 105 lm/W	CIE flux code n°3	70%, 79%, 81%, 83%	Lifetime L90B10 (hours)	> 90,000
Driver option	Integral control gear	Dimming type	On/Off, 1-10V, DALI	Lifetime L80B10 (hours)	> 90,000
Driver	Constant current (CC)	Product colours	Black, Dark Grey, White, Matt Silver, Bronze, Concrete - Urban, Softscape - Urban, Stone - Urban, Corten - Urban, Oak - Woodland, Walnut - Woodland, Pine - Woodland	Lifetime L80B50 (hours)	> 90,000
Input voltage	220-240 V 50/60 Hz			Variants (1-10V)	Compatible with EN/ IEC 60598-2-22: Suitable for emergency installations as central supply, non-maintained (Z0)
Optic	T1, T2, T3, T4	Weight	8.8 kg		
		Operating temperature	-20 °C to 40 °C		

VT-10001



Accessories



Anchor bolt
A11191



DALI Control System
Control-DALI