

LIGHT LINEAR VT 1 (VT-10002)



Product description

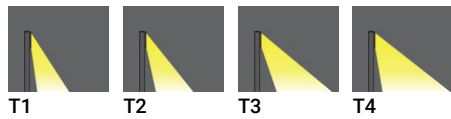
200x80 mm - 1000 mm - 1 side



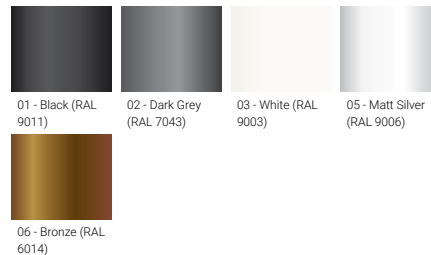
Luminaire Structure

- Die-cast aluminium housing and frame
- Extruded aluminium column
- Pre-treated before powder coating ensuring high corrosion resistance
- Single cable entry
- One IP68 connector supplied with 0.2 m of 3x1.0 sqmm outdoor cable
- Stainless steel fasteners in grade 304 with zinc flake coating (ZFC)
- Durable silicone rubber gasket
- Clear toughened glass
- High-efficiency PMMA lens
- Integral control gear

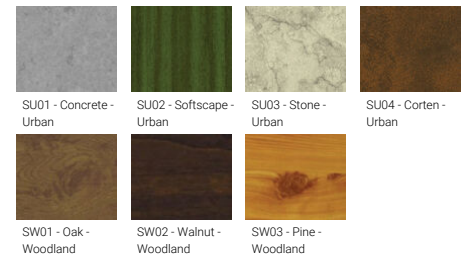
Optic



Product colour



Special finishes upon request



LIGHT LINEAR VT 1 (VT-10002)

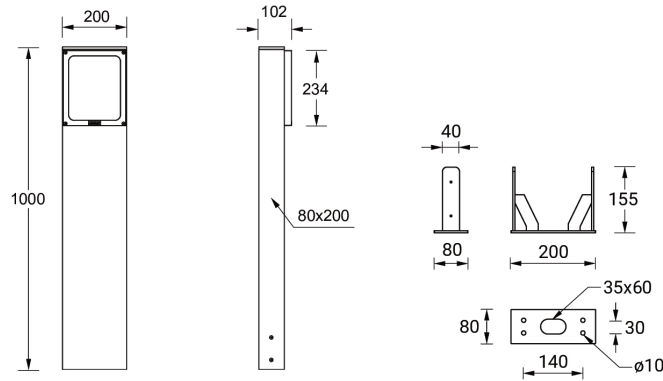
Technical information

Material	Aluminium
Light source	24 LED
Power	52 W
Lumen	3974 - 5287 lm
Efficacy	76 - 102 lm/W
Driver option	Integral control gear
Driver	Constant current (CC)
Input voltage	220-240 V 50/60 Hz
Optic	T1, T2, T3, T4

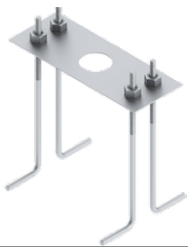
Optic value	104°x34°, 135°x35°, 94°x61°, 44°x21°
CCT / CRI	3000K CRI80, 4000K CRI80
Bug	B0-U3-G3, B0-U3-G4, B0-U4-G5
ULOR	15%, 16%, 20%
CIE flux code n°3	69%, 79%, 80%, 83%
Dimming type	On/Off
Product colours	Black, Dark Grey, White, Matt Silver, Bronze, Concrete - Urban, Softscape - Urban, Stone - Urban, Corten - Urban, Oak - Woodland, Walnut - Woodland, Pine - Woodland
Weight	8.9 kg
Operating temperature	-20 °C to 40 °C

Cable	One IP68 connector supplied with 0.2 m of 3x1.0 sqmm outdoor cable
Through wiring	Single cable entry
Lens / Reflector / Optic	Clear toughened glass, High-efficiency PMMA lens
MacAdam Ellipse	3 SDCM
Lifetime L90B10 (hours)	> 90,000
Lifetime L80B10 (hours)	> 90,000
Lifetime L80B50 (hours)	> 90,000

VT-10002



Accessories



Anchor bolt
A11191