

ZAAB 3 (ZA-20001) (Version 2)



Product description

With mounting box - Single



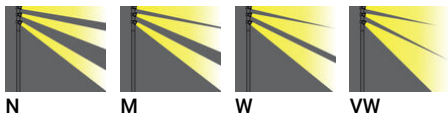
Luminaire Structure

- Die-cast aluminium housing
- Pre-treated before powder coating ensuring high corrosion resistance
- Single cable entry
- One cable gland supplied with 2 m of 3x1.0 sqmm outdoor cable

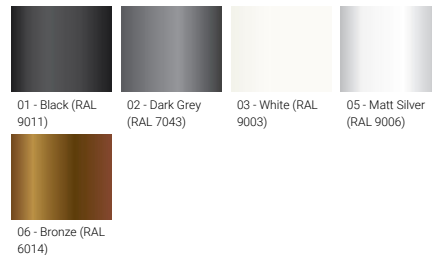
- Stainless steel fasteners in grade 304 with zinc flake coating (ZFC)
- Durable silicone rubber gasket
- High-efficiency optical reflector
- Clear toughened glass

- Integral control gear

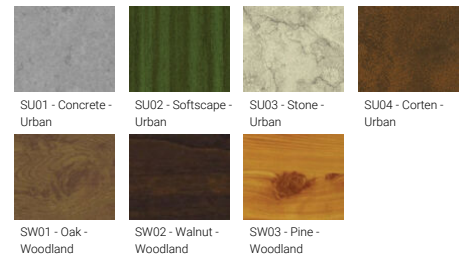
Optic



Product colour



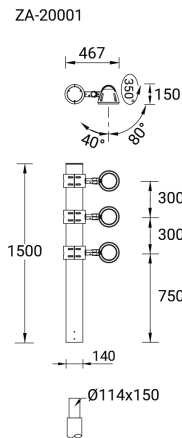
Special finishes upon request



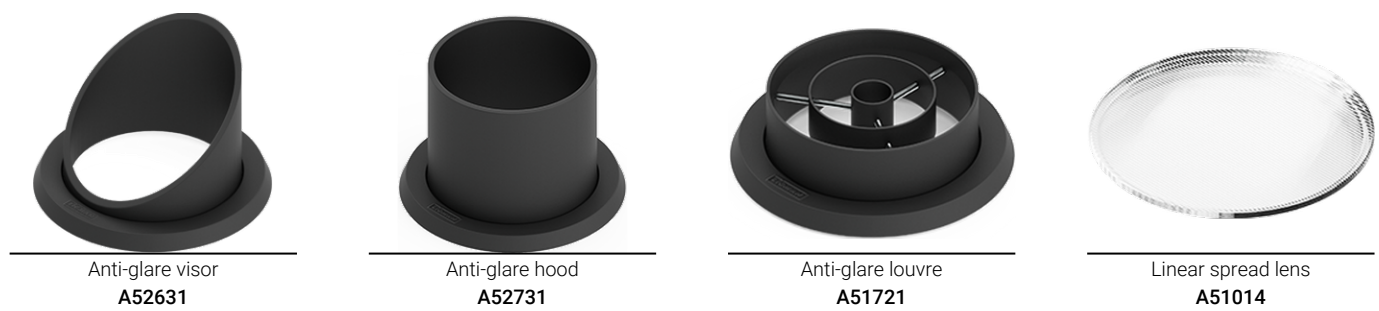
ZAAB 3 (ZA-20001) (Version 2)

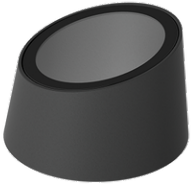
Technical information

Material	Aluminium	Optic value	16°, 26°, 41°, 65°	Operating temperature	-20 °C to 40 °C
Light source	3 x 1 COB	CCT / CRI	3000K CRI80, 4000K CRI80	Cable	One cable gland supplied with 2 m of 3x1.0 sqmm outdoor cable
Power	120 W	Bug	B3-U0-G0, B3-U0-G1	Through wiring	Single cable entry
Lumen	12582 - 15039 lm	ULR	0%	Lens / Reflector / Optic	High-efficiency optical reflector, Clear toughened glass
Efficacy	105 - 125 lm/W	ULOR	0%	MacAdam Ellipse	3 SDCM
Driver option	Integral control gear	CIE flux code n°3	100, 99	Lifetime L90B10 (hours)	> 50,700
Driver	Constant current (CC)	Dimming type	On/Off, 1-10V, DALI	Lifetime L80B10 (hours)	> 63,500
Input voltage	220-240 V 50/60 Hz	Product colours	Black, Dark Grey, White, Matt Silver, Bronze, Concrete - Urban, Softscape - Urban, Stone - Urban, Corten - Urban, Oak - Woodland, Walnut - Woodland, Pine - Woodland	Lifetime L80B50 (hours)	> 63,500
Optic	N, M, W, VW			Variants (1-10V, DALI)	Compatible with EN/ IEC 60598-2-22: Suitable for emergency installations as central supply, non-maintained (Z0)
		Weight	36.8 kg		



Accessories



ZAAB 3 (ZA-20001) (Version 2)

Snoot
A54231



DALI Control System
Control-DALI

Please contact the factory for technical details if you wish to use Anti-glare accessories, Colour filters, Lenses and slip glasses in combination.